

BCRD-501/Truck
Crumb Rubber Asphalt Spreader
Ground Tire Rubber (GTR)
Truck Mounted

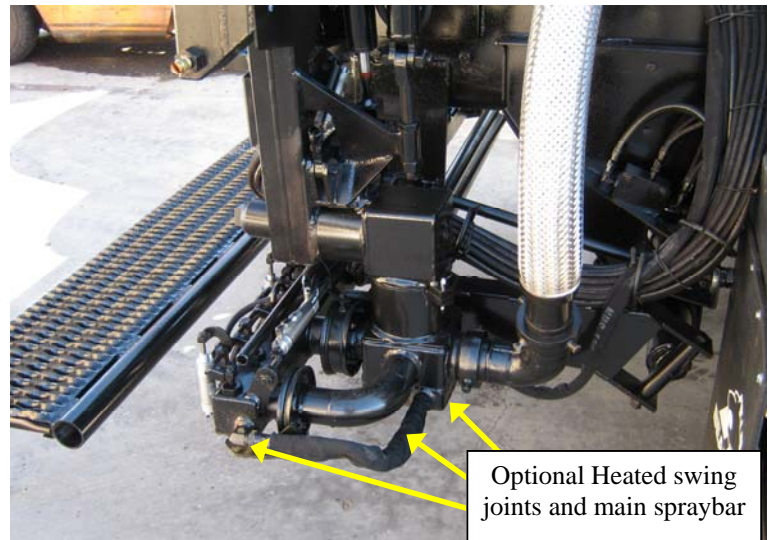
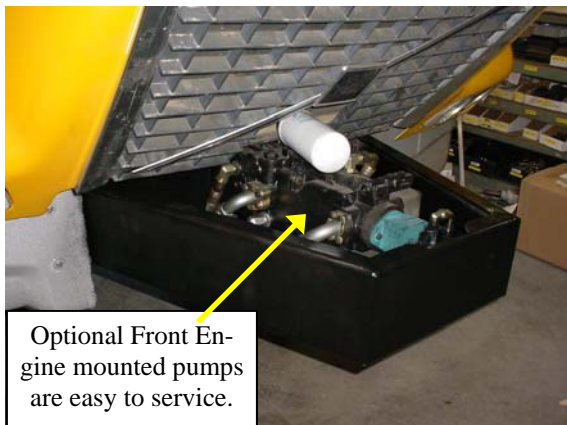
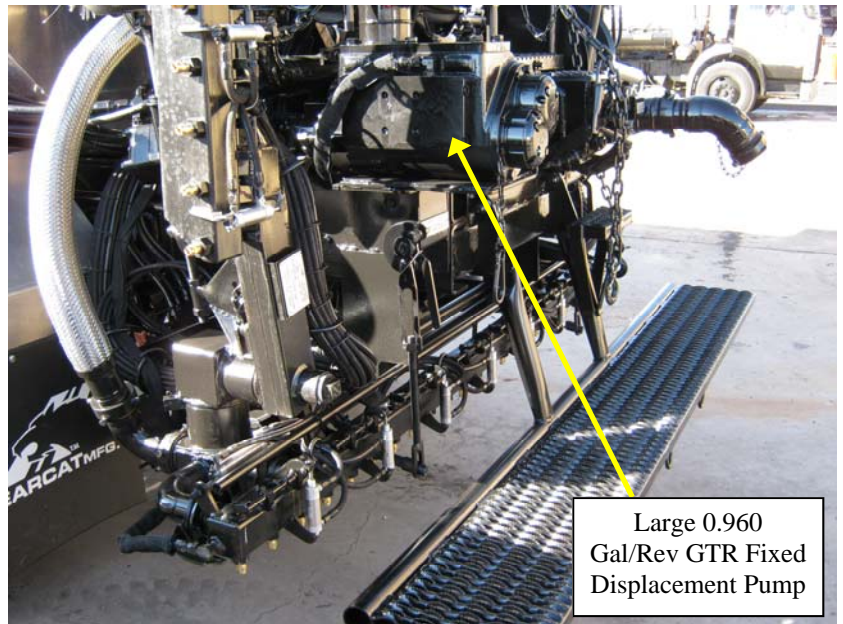
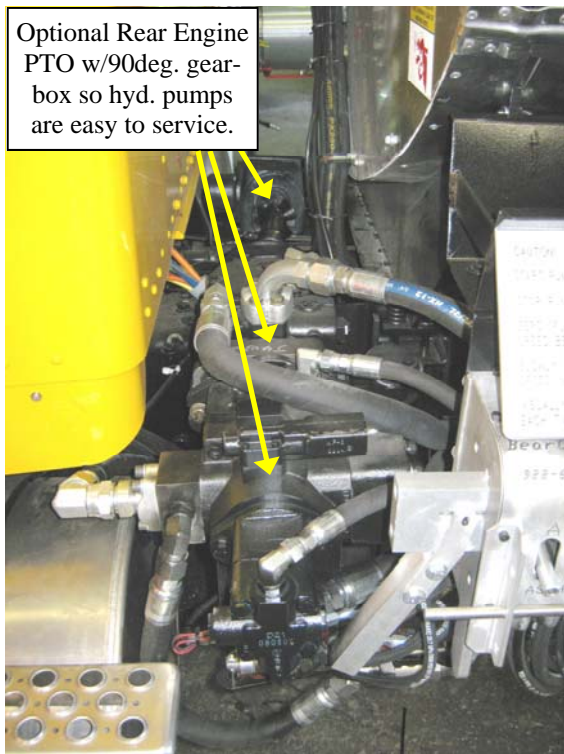
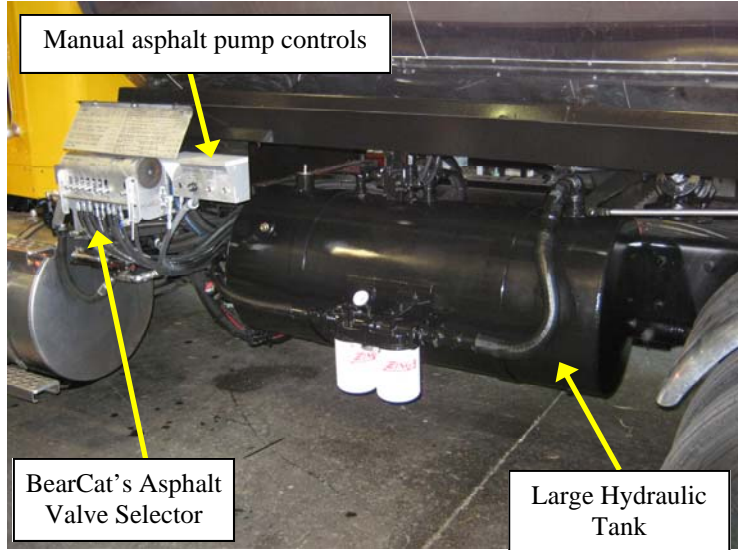
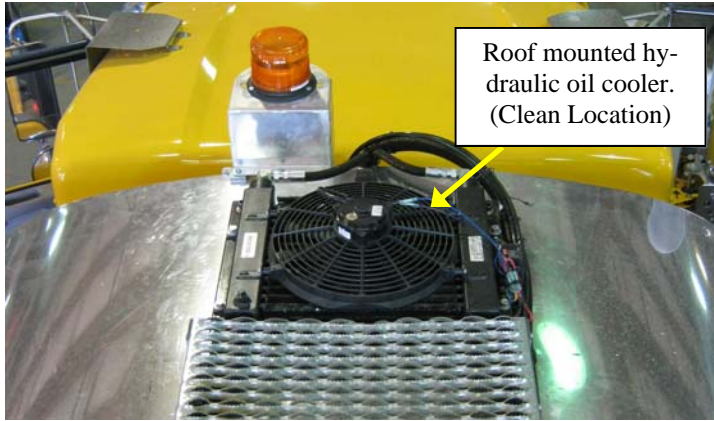


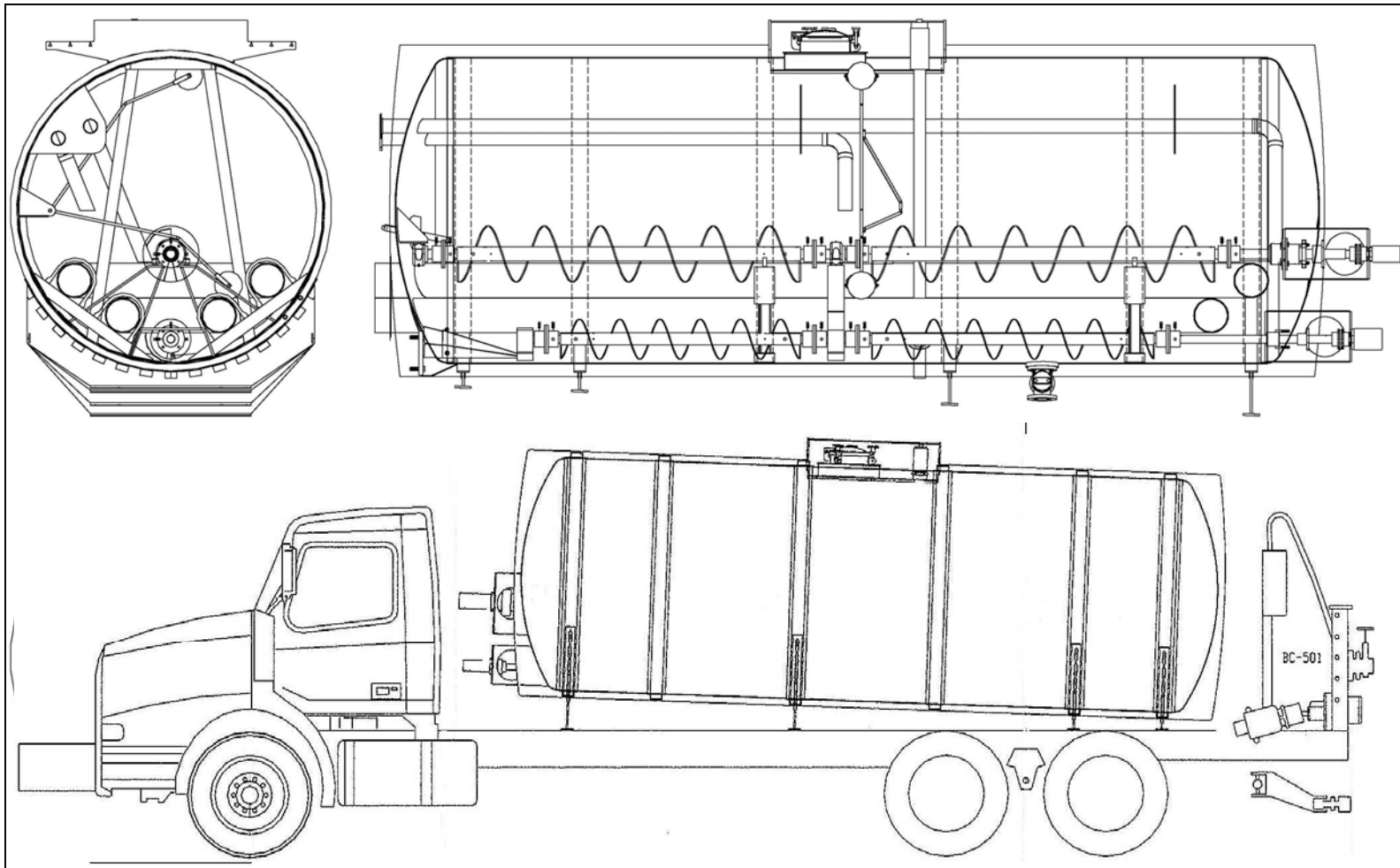
BearCat's Industry Leading Firsts _____

- Full Cab Control
- 1-Foot Spray control
- Internal Poppet Spray Valves
- Computer Rate Control
- Limit Switches on Wings
- Double Fold Wings
- All Electric Tack Truck
- Self Contained Crumb Rubber Trailer

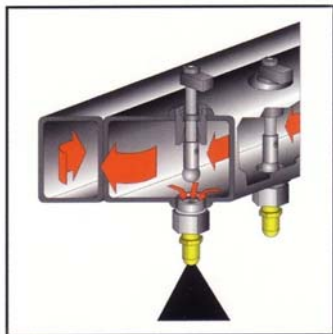
_____ *BearCat Mfg. Inc. "Innovation by Design"*

BCRD-501/Truck Crumb Rubber / Ground Tire Rubber (GTR) Truck Mounted With Two Augers (One Mixing & One Flow)





In-cab Controls



Spray Valves

Internal poppet spray valves are immersed in hot asphalt, providing instant spray when valves open. Uniform spray patterns are assured and clogs are eliminated.

BCRD-501/Truck Features

- Up to 3,800 Gallon (14,385 Liter) Tank.
- 14" (35.6 cm) reversible mixing auger, either pulls material to center of the tank or pushes material to each end of the tank.
- 10" reversible auger. To move material towards the tank valve.
- Large auger support bearings.
- Clean bore design for smooth material flow while mixing.
- Two full length heat tubes (propane or diesel fired).
- Rolled exterior tank support rings.
- Choice of optional Hot Oil heat traced systems; used to heat all asphalt valves, the spray-bar and filter-screen housings.
- Large heated 5" (12.7 cm) tank valve.
- Heated 3" (7.62 cm) side load valve for fast plant loading.
- Bearcat's exclusive spraybar pre-charge design to prevent streaking at the start line.
- The same BearCat CRC cab control system you have come to trust on the BC501 is used on the GTR spreader systems.
- This truck is designed to spread rubberized asphalt containing 15% to 22% "Crumb Rubber" but can also spread conventional asphalt products.

BCRD-501/Truck Crumb Rubber / Ground Tire Rubber (GTR) Truck Mounted With Two Augers (One Mixing & One Flow)

Product pump and components

- Product pump 0.960G/rev (3.64 L/rev) 400GPM (1515 LPM) maximum, (large pump inlet porting).
- Large 4" (10 cm) pump intake plumbing.
- Large 5" (12.7 cm) heated tank valve.
- Large capacity suction strainer.
- Maximum asphalt system operating temperature, 450°F (232° C) w/stainless hoses.
- Spray bar serviceable screen.
- BearCat's pneumatic asphalt valve selector.

Truck requirements for hydraulic pump drive system , (NOTE: must be able to transfer 100hp).

- Front-engine mount PTO (FPTO) through grille front mounted hydraulic pump package.
- Optional: Live Rear-Engine PTO (RPTO) 90deg. gearbox drive system for the hydraulic pump package.

Spraybar and components

- Full circulating spraybar.
- Break away wings to prevent damage if an object is stuck while spreading product, shear pin replaceable in less than 1 minute.
- Spraybar 16' (4.9 m) w/1' (0.3 m) cuts.
- 8' (2.5 m) main bar w/4' (1.25 m) single fold wings.
- Stainless steel, 3" (7.62cm) bar feed hoses.
- Fully internal in the asphalt spray poppet valves.

Hydraulic System

- Heavy duty 4.57cu. In. (75cc) Sauer-Danfoss hydrostatic piston pump.
- LSHT motor 12.2 cu. In. (200cc) w/external loop flushing valve.
- Auxiliary pump, 60cc open loop piston pump, used for the auger, and hot oil circulating pump.
- Feed auger motor LSHT 12.2 cu. In. (200cc) chain coupling direct drive.
- Mixing auger motor LSHT 24.4 cu. In. (400cc) chain coupling direct drive.
- Spraybar and wing raise lower, spraybar side shift functions supplied by a V10 vane pump.
- Hydraulic tank 50 gal. (190 liters) w/suction strainers & return-line filters.
- Roof mounted large capacity hydraulic oil cooler w/electric fan.

Tank Specifications

- Up to a 3,800 gallon (14,385 liter) tank
- Shell: Mild steel plate 3/16" (4.76mm).
- Baffles: n/a clean bore (for mixing)
- Heads: Mild steel plate 3/16" (4.76mm).
- Insulation: mineral wool 2" (5cm).
- Skin: Bright aluminum 0.050" (1.27mm).
- False head: Aluminum 0.125" (3.2mm).

Heating system

- Two 8" (20.5 cm) u-type heat tubes.
- Two 487,500BTU diesel burners.
- Optional two 403,400BTU propane burners.
- Optional: (HOT) Heat transfer oil system for pump case, plumbing, spraybar swing joints & valves.

Auger

- Flow auger: 10" (25.4cm).
- Flow auger bearings: 2" (5.08cm).
- Mixing auger: 14" (35.56cm).
- Mixing auger bearings: 2 7/16" (6.19cm).
- Both augers are reversible.
- The auger shafts extend thru the front tank head, the auger shaft is sealed with a high temperature packing gland, and is driven by a LSHT motor that is direct coupled to the auger shaft

Computer Rate Control System (CRC)

- CRC control, cab mounted for full spreading operation from drivers seat.
- Capable of controlling the by-pass air pressure from the cab.
- Control of the auger speed and direction from cab.
- Capable of pre-charging the spray bar to prevent drizzling at the spread start line.

Passenger side remote mirror

- Bearcat air operated from cab remote mirror.