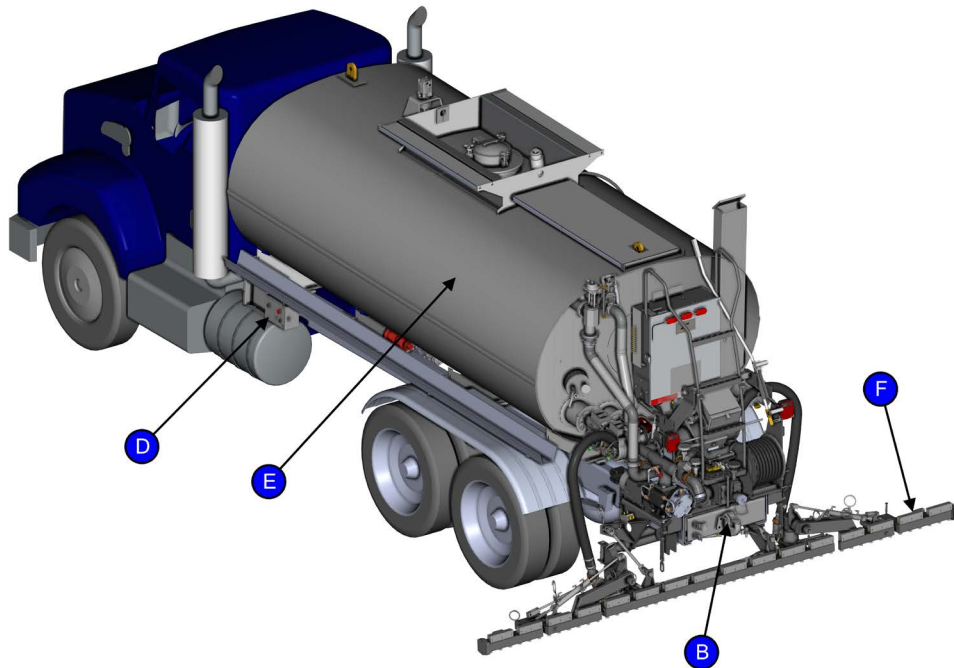
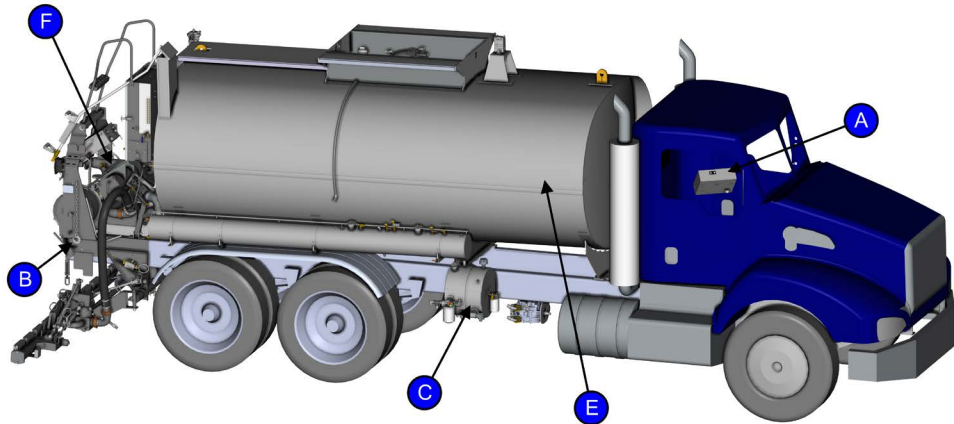




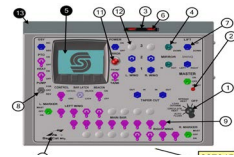
ID	Part #	Qty
A	Console	1
B	Hitch	1
C	Hydraulic	1
D	Side Control	1
E	Tank	1
F	Spraybar	1

- Id Main Assembly Detail
- Id Assembly Detailed on another page
- Id Part Assembly
- Id Optional Assembly
- Id Individual Part

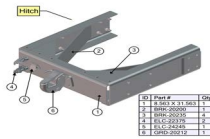


Parts Contents

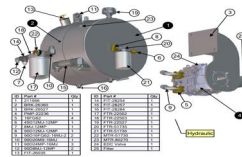
A CONSOLE 126



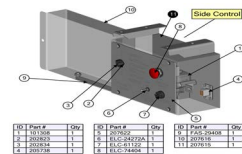
B HITCH 126



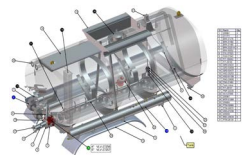
C HYDRAULIC 126



D SIDE CONTROL 126

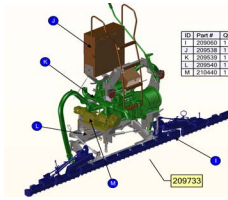


E TANK 127



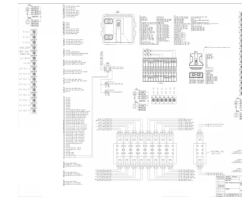
- 128 Burner
- 128 Flush Tank

F REAR ASSEMBLY 128

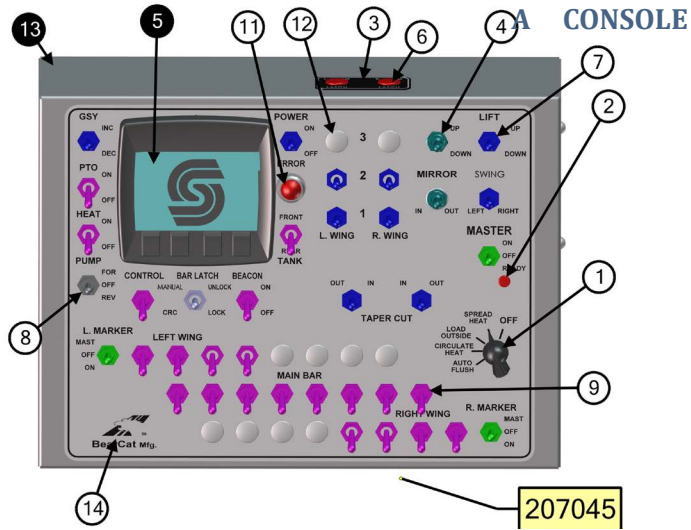


- 128 I Spraybar Assembly
- 129 Outer Wing Assembly
- 129 Tri-Valve Assembly
- 129 Inner Wing Assembly
- 129 J Rear Control Assembly
- 129 Standard and Finger Linkage
- 130 Valve Box
- 131 Valve Bank
- 131 Rear Control Box
- 132 K Plumbing and Valve Assembly
- 133 L Bar Mount and Actuation Assembly
- 134 M Pump Drive Assembly
- 135 Product Pump

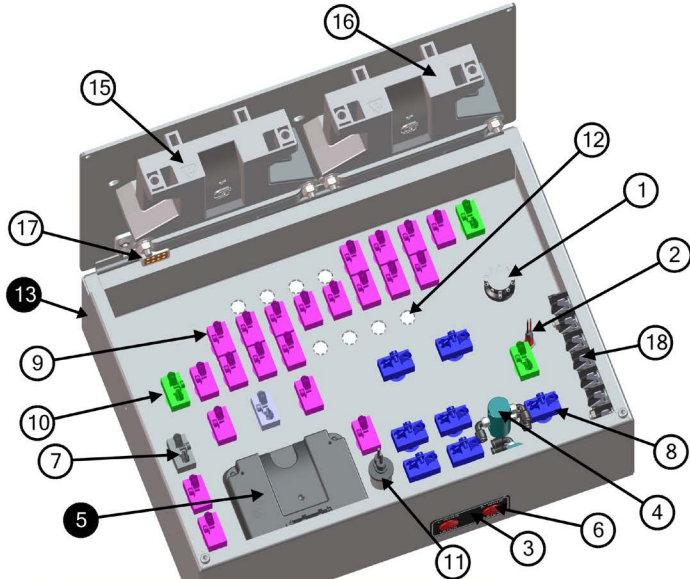
SCHEMATICS 136



- 136 Side Control Box
- 137 Cab Console
- 138 Valve Box
- 139 Rear Control Box
- 140 Rear Control Box (Propane Burner)
- 141 Hydraulic



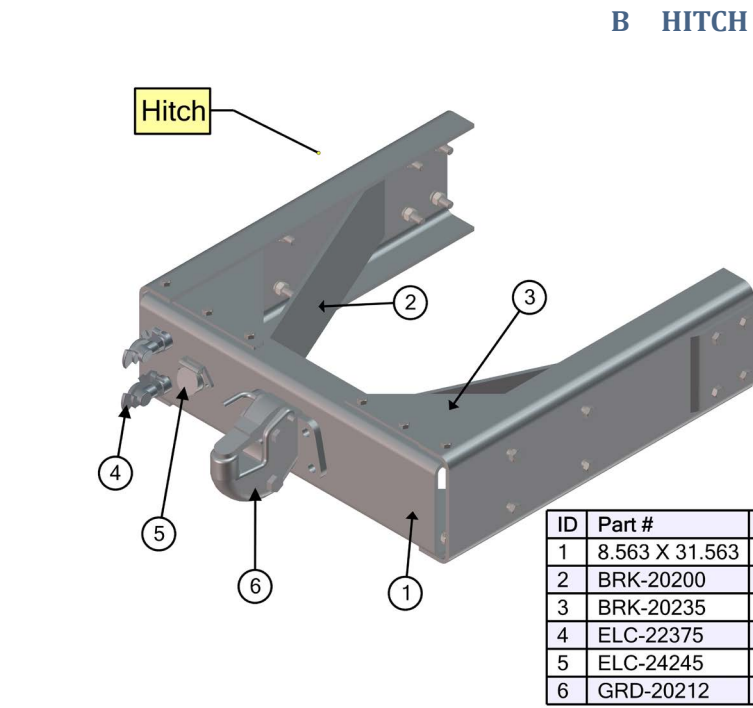
207045



ID	Part #	Qty
1	202823	1
2	204067	1
3	207033	1
4	ELC-24186	2
5	207057	1
6	ELC-26239	2
7	ELC-24272A	1
8	ELC-24274A	10
9	ELC-24275	21
10	ELC-51748	3

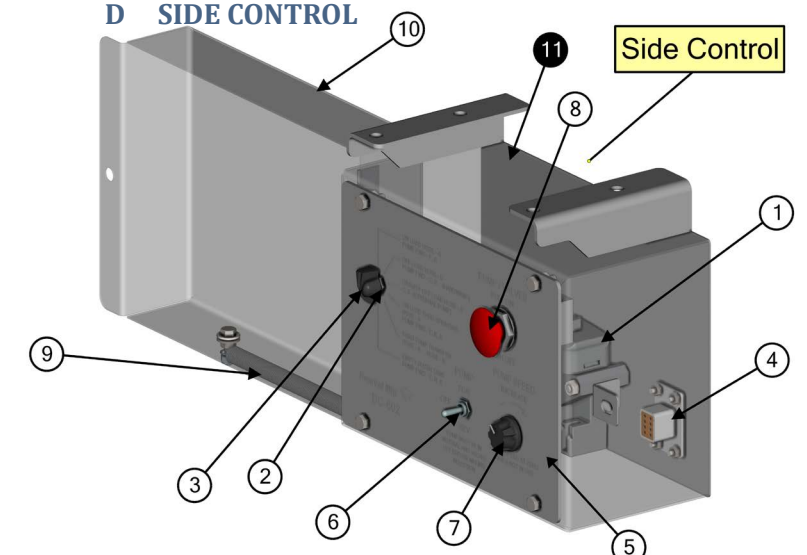
ID	Part #	Qty
11	ELC-60307	1
12	FIT-24219	10
13	207044	1
14	207041	1
15	207055	1
16	207056	1
17	205738	1
18	200710	7

207454



Hitch

ID	Part #	Qty
1	8.563 X 31.563	1
2	BRK-20200	1
3	BRK-20235	4
4	ELC-22375	2
5	ELC-24245	1
6	GRD-20212	1

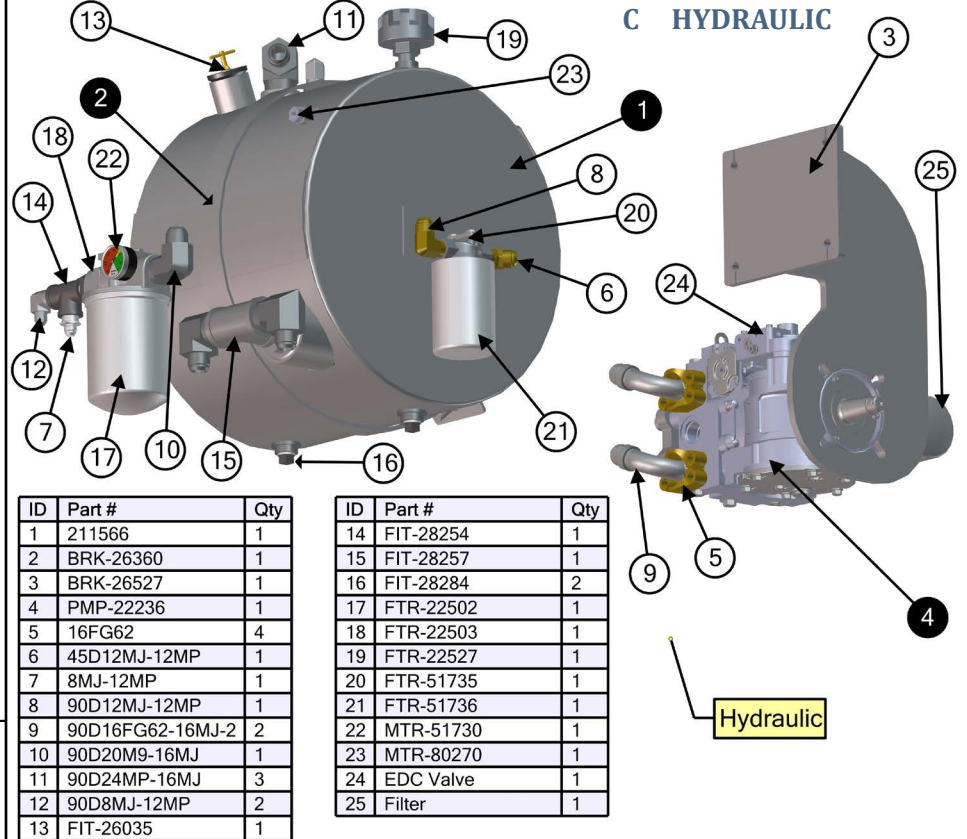


Side Control

ID	Part #	Qty
1	101308	1
2	202823	1
3	202834	1
4	205738	1

ID	Part #	Qty
5	207622	1
6	ELC-24272A	1
7	ELC-61122	1
8	ELC-74404	1

ID	Part #	Qty
9	FAS-29408	1
10	207616	1
11	207615	1



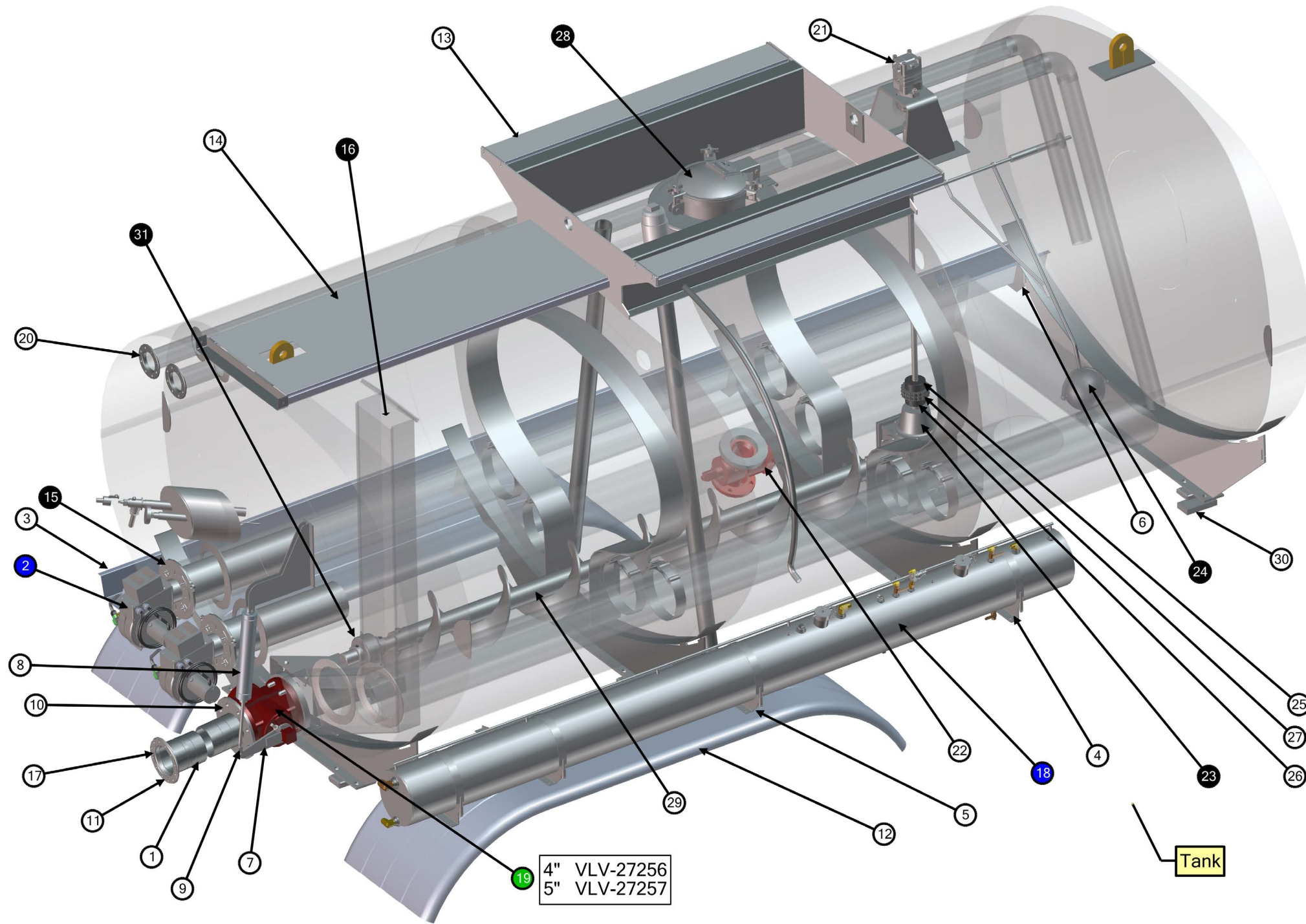
Hydraulic

ID	Part #	Qty
1	211566	1
2	BRK-26360	1
3	BRK-26527	1
4	PMP-22236	1
5	16FG62	4
6	45D12MJ-12MP	1
7	8MJ-12MP	1
8	90D12MJ-12MP	1
9	90D16FG62-16MJ-2	2
10	90D20M9-16MJ	1
11	90D24MP-16MJ	3
12	90D8MJ-12MP	2
13	FIT-26035	1

ID	Part #	Qty
14	FIT-28254	1
15	FIT-28257	1
16	FIT-28284	2
17	FTR-22502	1
18	FTR-22503	1
19	FTR-22527	1
20	FTR-51735	1
21	FTR-51736	1
22	MTR-51730	1
23	MTR-80270	1
24	EDC Valve	1
25	Filter	1

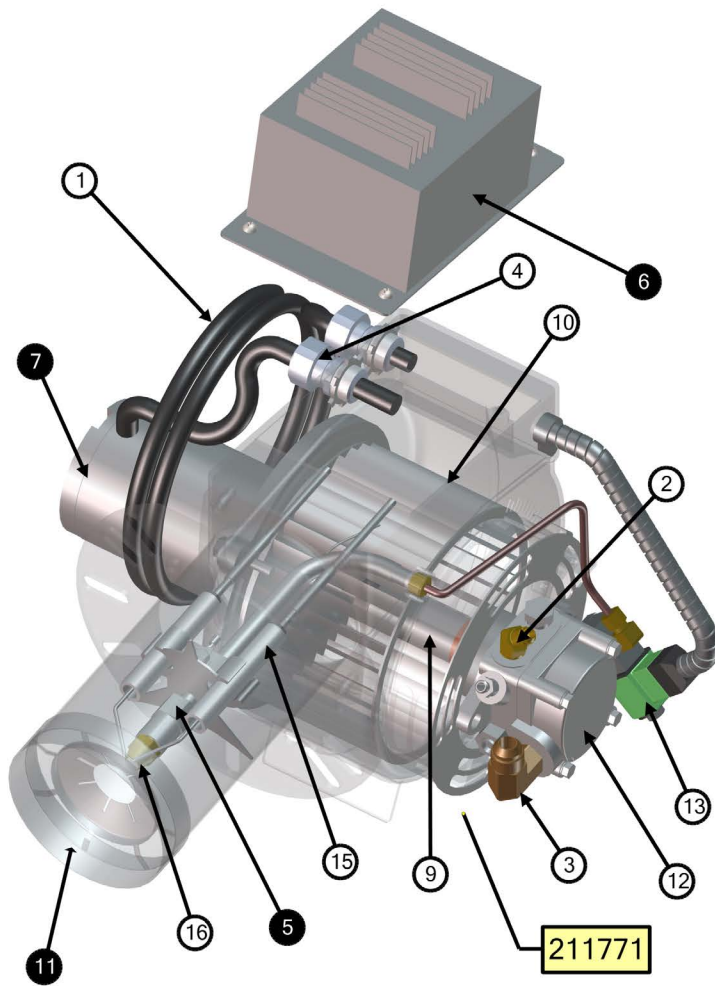


E TANK



ID	Part #	Qty
1	205881	4
2	211771	2
3	BRK-21276	1
4	BRK-21482	2
5	BRK-21485	2
6	BRK-23251A	4
7	BRK-50552	1
8	CYL-27323	1
9	FAS-27345	1
10	FIT-100042	1
11	FIT-29160	1
12	GRD-23221	2
13	GRD-50009	2
14	GRD-50477	1
15	HSG-25253	2
16	HSG-91106	1
17	RNG-29085	1
18	TNK-21480	1
19	Tank Valve *	1
20	FIT-29157	2
21	PMP-22235	1
22	VLV-27255	1
23	205987	1
24	MTR-21266	1
25	205850	1
26	PTM-32669	1
27	PTM-32672	1
28	HSG-21236	1
29	205839	1
30	MSC-26634	8
31	PTM-26134	1

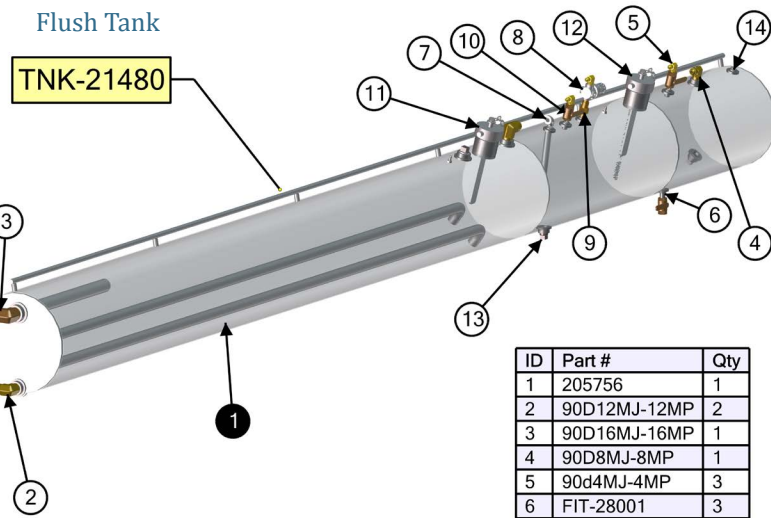
Burner



ID	Part #	Qty
1	209472	1
2	45D6MJ-4MP	1
3	90D8MJ-4MP	1
4	ELC-24420	2
5	ELC-24947	1
6	ELC-24970	1
7	ELC-24958	1
9	FIT-24958	1

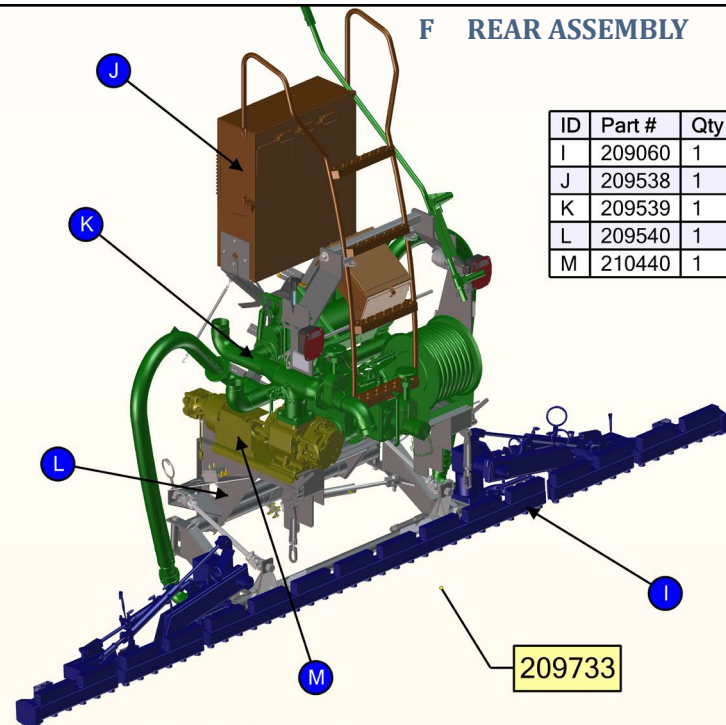
ID	Part #	Qty
10	MCH-24951	1
11	HSG-24948	1
12	PMP-24980	1
13	VLV-24953	1
15	ELC-24954	2
16	FIT-24951	1

Flush Tank



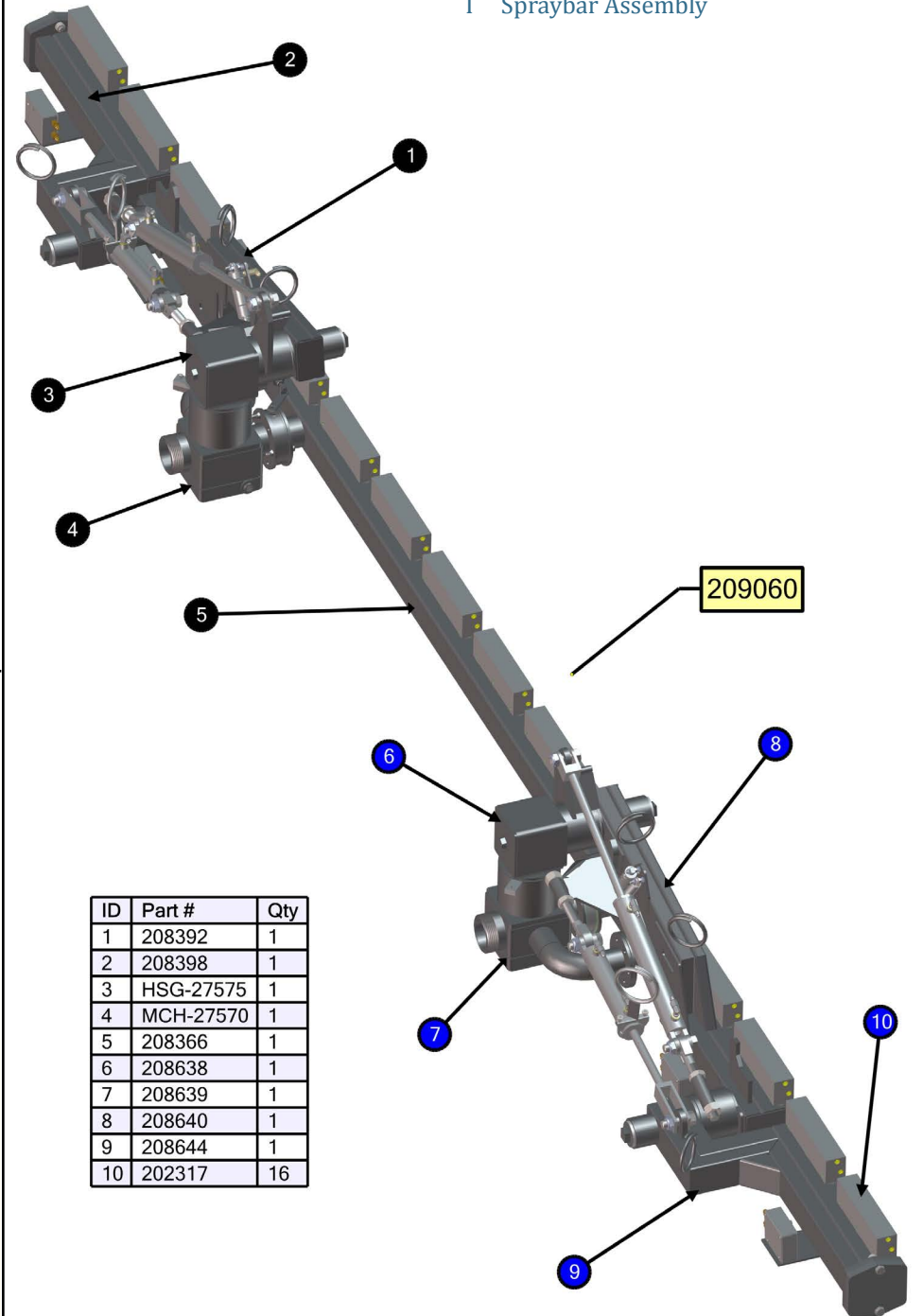
ID	Part #	Qty
1	205756	1
2	90D12MJ-12MP	2
3	90D16MJ-16MP	1
4	90D8MJ-8MP	1
5	90d4MJ-4MP	3
6	FIT-28001	3
7	FIT-28236	1
8	VLV-26210	1
9	VLV-29194	1
10	VLV-29195	3
11	FIT-26044	1
12	FIT-26045	1
13	FIT-28283	2
14	FIT-28296	1

F REAR ASSEMBLY



ID	Part #	Qty
I	209060	1
J	209538	1
K	209539	1
L	209540	1
M	210440	1

I Spraybar Assembly

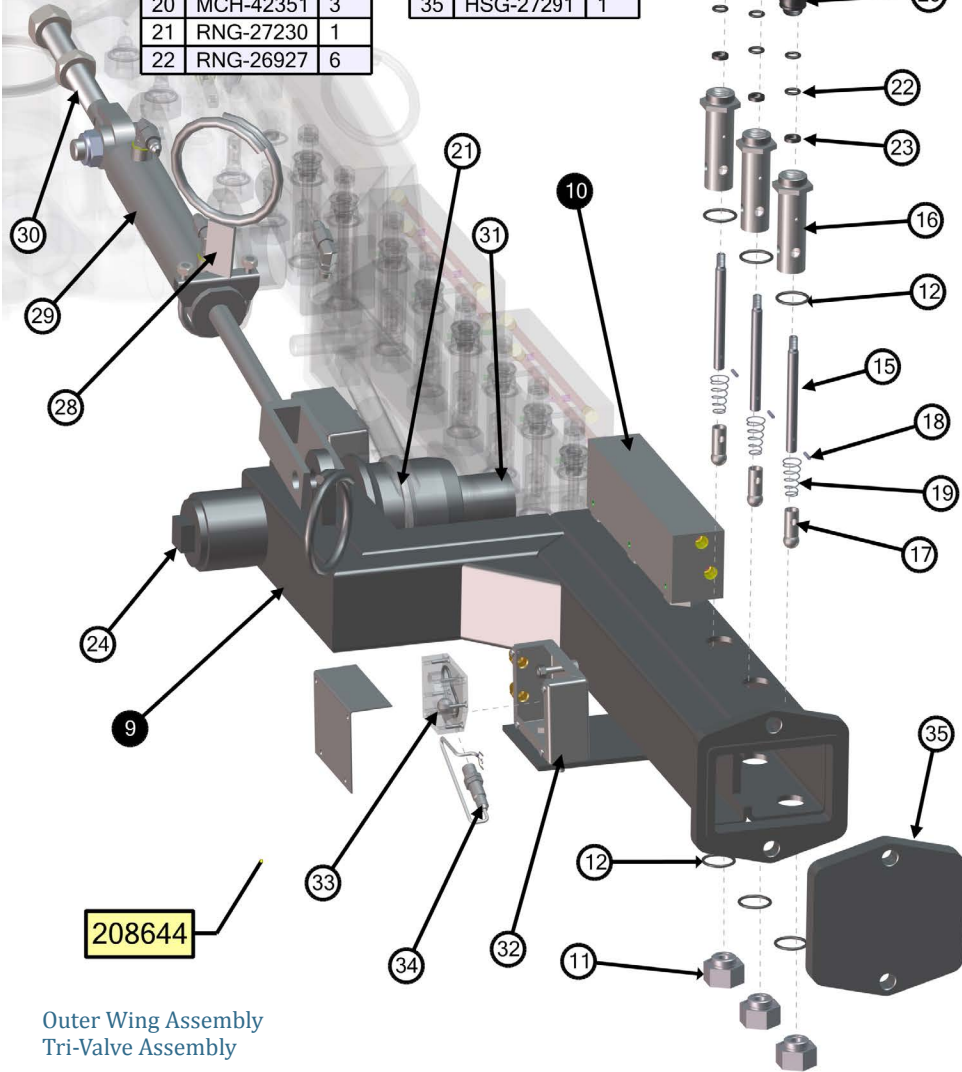


ID	Part #	Qty
1	208392	1
2	208398	1
3	HSG-27575	1
4	MCH-27570	1
5	208366	1
6	208638	1
7	208639	1
8	208640	1
9	208644	1
10	202317	16

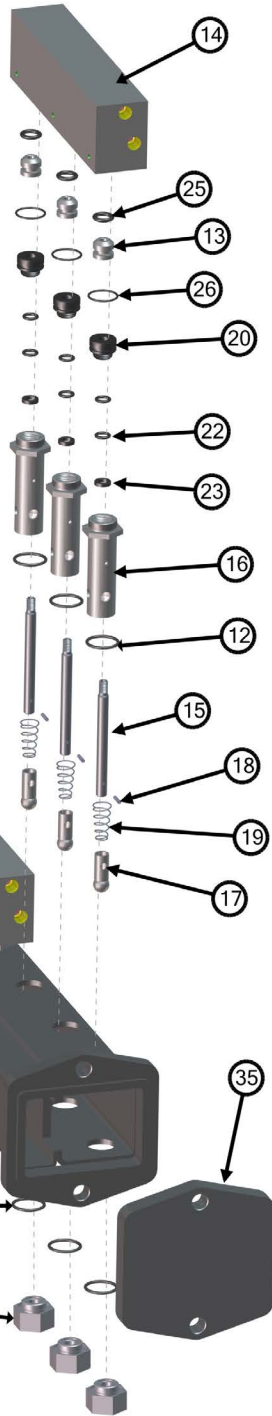


ID	Part #	Qty
9	208644	1
10	202317	16
11	FIT-40516	3
12	RNG-40520	6
13	201767	3
14	201802	1
15	203907	3
16	204863	3
17	MCH-27364	3
18	FAS-27359	3
19	FAS-27418	3
20	MCH-42351	3
21	RNG-27230	1
22	RNG-26927	6

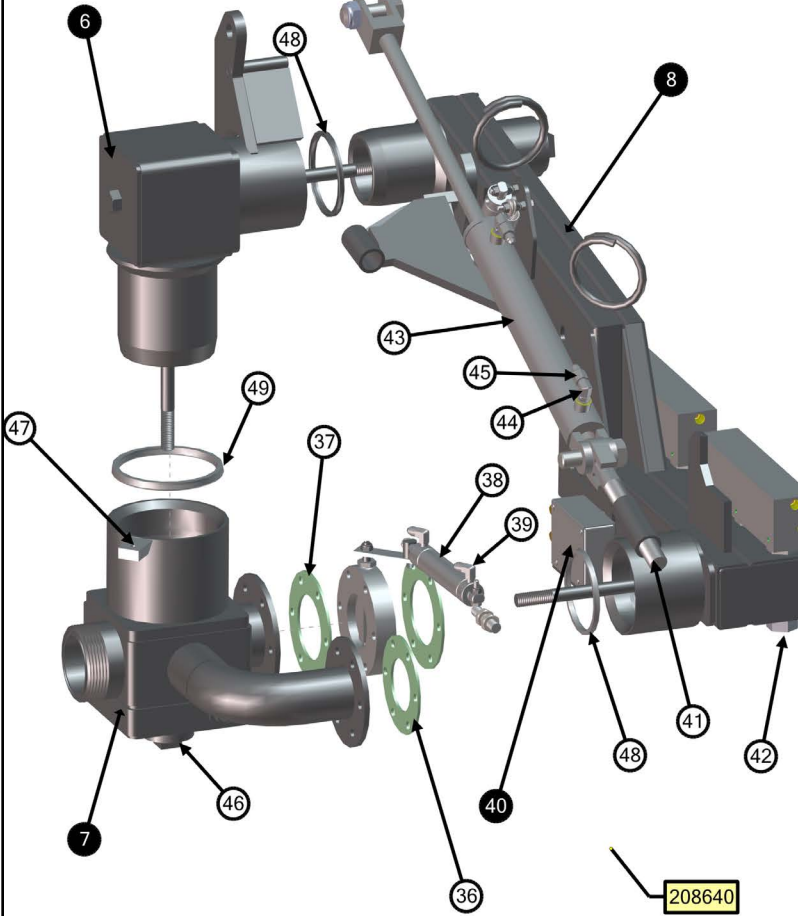
ID	Part #	Qty
23	RNG-27232	3
24	FIT-28288	1
25	RNG-42356	3
26	RNG-42357	3
28	208637	1
29	CYL-22028	1
30	BRK-40507	1
31	HSG-27385	1
32	206098	1
33	207542	1
34	207745	1
35	HSG-27291	1



Outer Wing Assembly
Tri-Valve Assembly

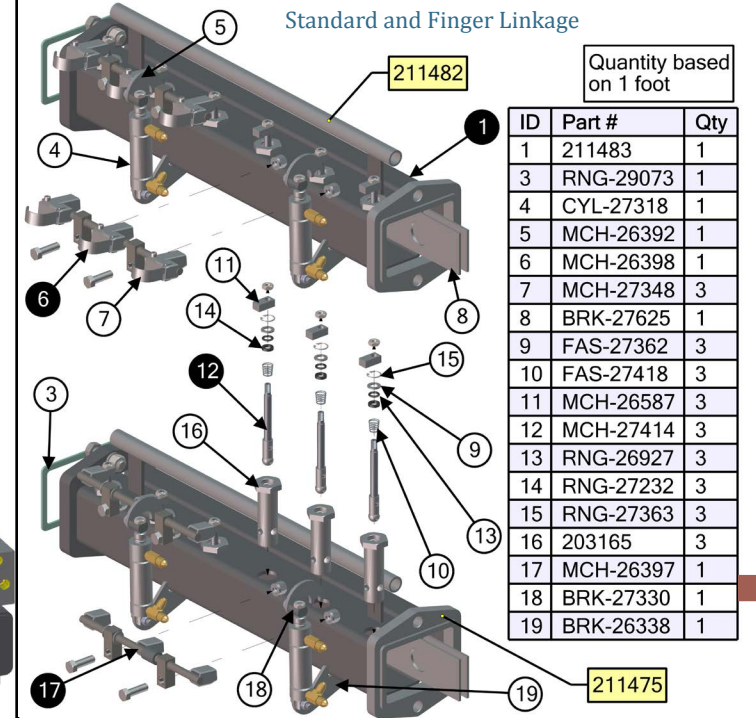


Inner Wing Assembly



ID	Part #	Qty
6	208638	1
7	208639	1
8	208640	1
36	RNG-29050	1
37	RNG-29055	2
38	CYL-27487	1
39	90D4MJ-2MP	1
40	206100	1
41	BRK-40507	1

ID	Part #	Qty
42	FIT-40516	1
43	CYL-22300	1
44	90D4MB-4MJ	1
45	FIT-29980	1
46	FIT-28288	1
47	BRK-27338	1
48	RNG-27230	2
49	RNG-27231	1



J Rear Control Assembly

ID	Part #	Qty
1	209537	1
2	208092	1
4	209770	1
5	209771	1
6	210139	1
7	BRK-52115	1
8	DCL-21203	1
9	DCL-21204	1
10	FAS-24338	1
11	FAS-24338A	1
12	GRD-52116	1
13	MSM-26187	1

209538

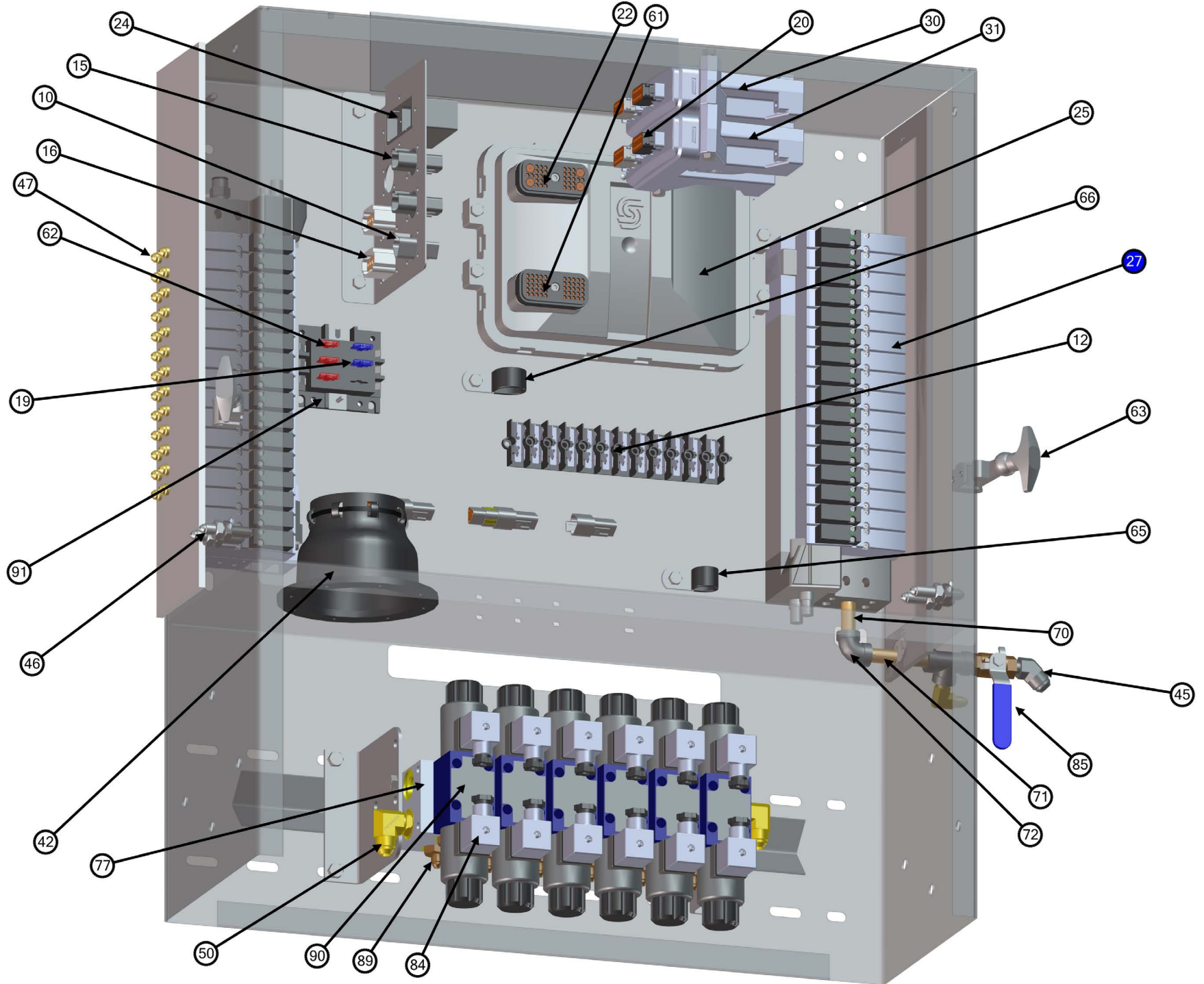
Quantity based on 1 foot

ID	Part #	Qty
1	211483	1
3	RNG-29073	1
4	CYL-27318	1
5	MCH-26392	1
6	MCH-26398	1
7	MCH-27348	3
8	BRK-27625	1
9	FAS-27362	3
10	FAS-27418	3
11	MCH-26587	3
12	MCH-27414	3
13	RNG-26927	3
14	RNG-27232	3
15	RNG-27363	3
16	203165	3
17	MCH-26397	1
18	BRK-27330	1
19	BRK-26338	1

Parts

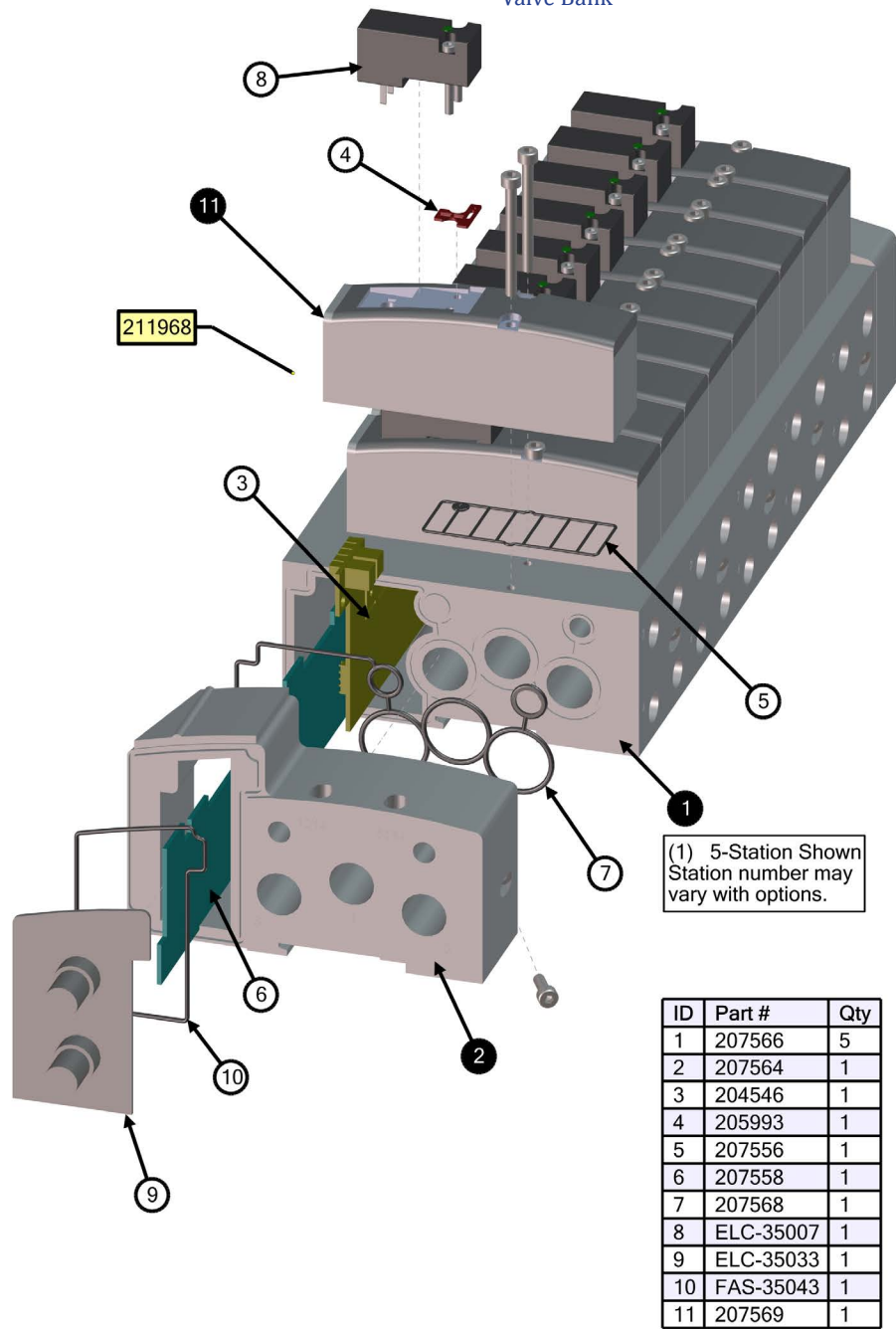
209537

ID	Part #	Qty
10	200656	1
12	200710	12
15	201949	2
16	205738	2
19	206443	2
20	206869	2
22	207581	1
24	207611	1
25	208045	1
27	211968	2
30	209025	1
31	209026	1
42	209809	1
45	90D8MJ-4MP	1
46	4MJ-4MJBH	4
47	4MJ-4MP	54
50	90D8MB-8MJ	2
61	ELC-74100	1
62	ELC-80429	3
63	FAS-24338	2
65	FAS-24502	1
66	FAS-24503	1
70	FIT-28023B	1
71	FIT-28024B	1
72	FIT-28206B	1
77	MSC-22056	1
84	ELC-53334	1
85	VLV-29200	1
89	8MB-4MJ	11
90	VLV-100073	6
91	206356	1





Valve Bank

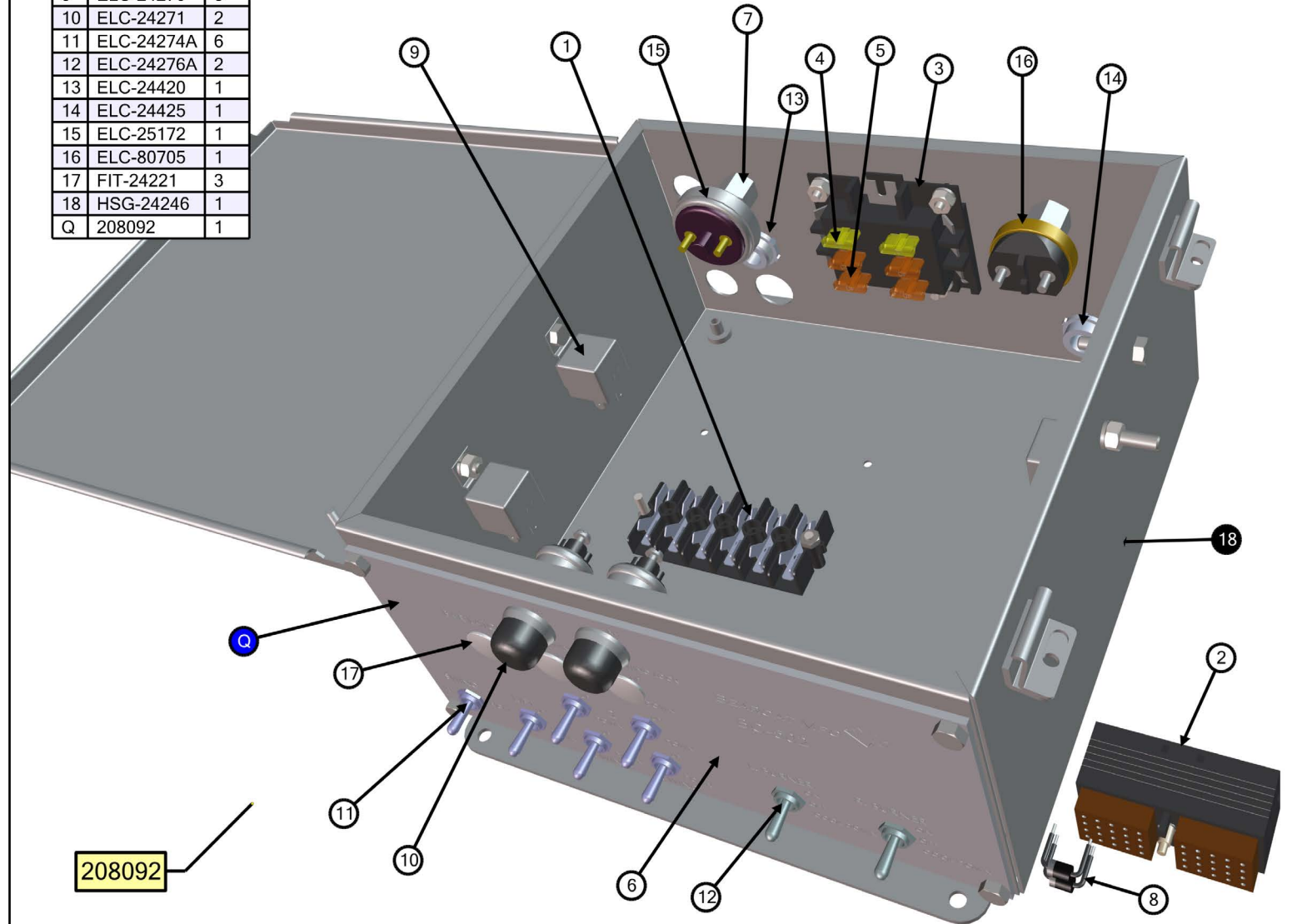


(1) 5-Station Shown
Station number may vary with options.

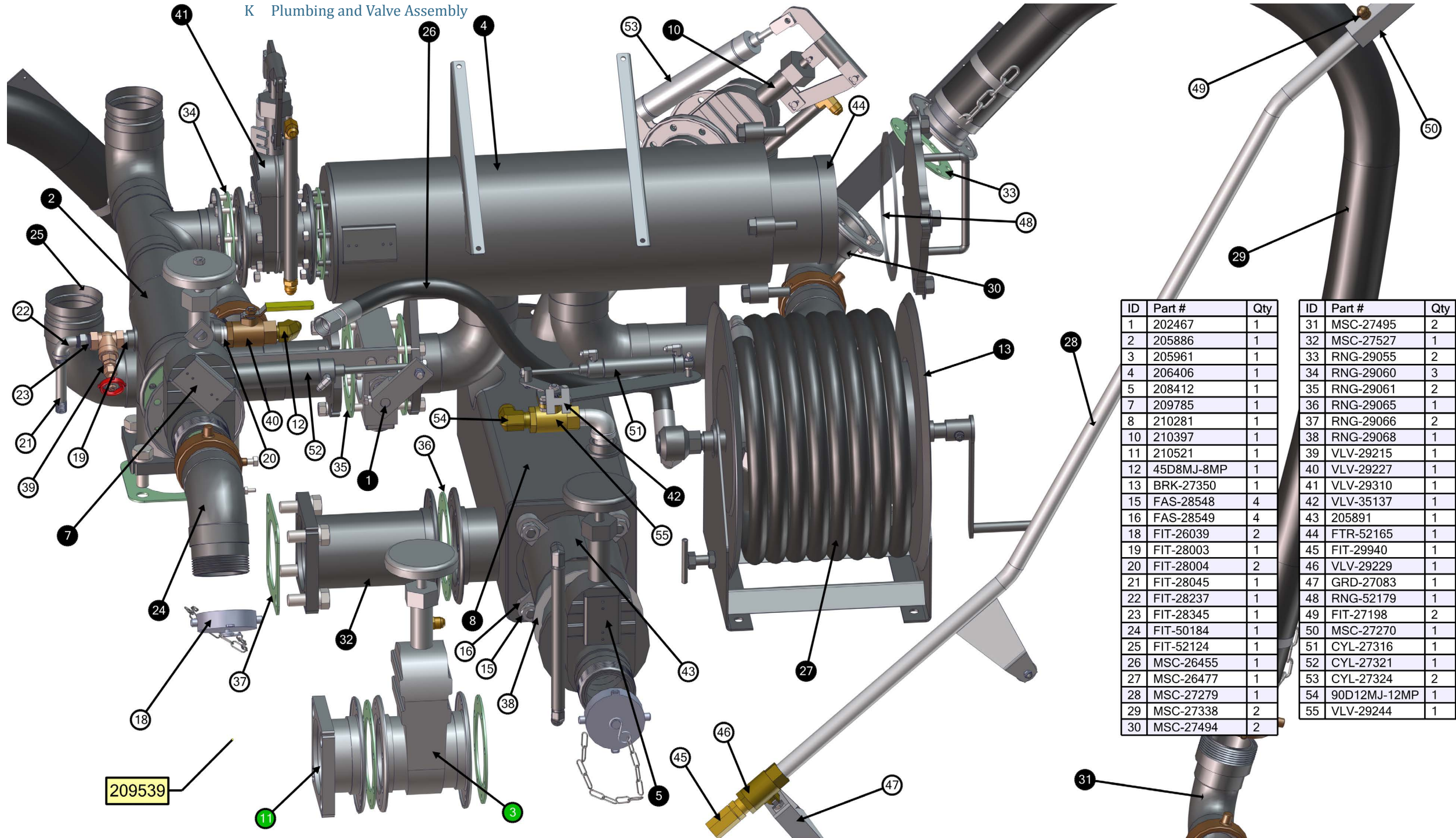
ID	Part #	Qty
1	207566	5
2	207564	1
3	204546	1
4	205993	1
5	207556	1
6	207558	1
7	207568	1
8	ELC-35007	1
9	ELC-35033	1
10	FAS-35043	1
11	207569	1

ID	Part #	Qty
1	200710	6
2	201058	1
3	206356	1
4	206357	2
5	206359	4
6	208005	1
7	4FP-4MJBH	2
8	ELC-24254	2
9	ELC-24270	3
10	ELC-24271	2
11	ELC-24274A	6
12	ELC-24276A	2
13	ELC-24420	1
14	ELC-24425	1
15	ELC-25172	1
16	ELC-80705	1
17	FIT-24221	3
18	HSG-24246	1
Q	208092	1

Rear Control Box



K Plumbing and Valve Assembly



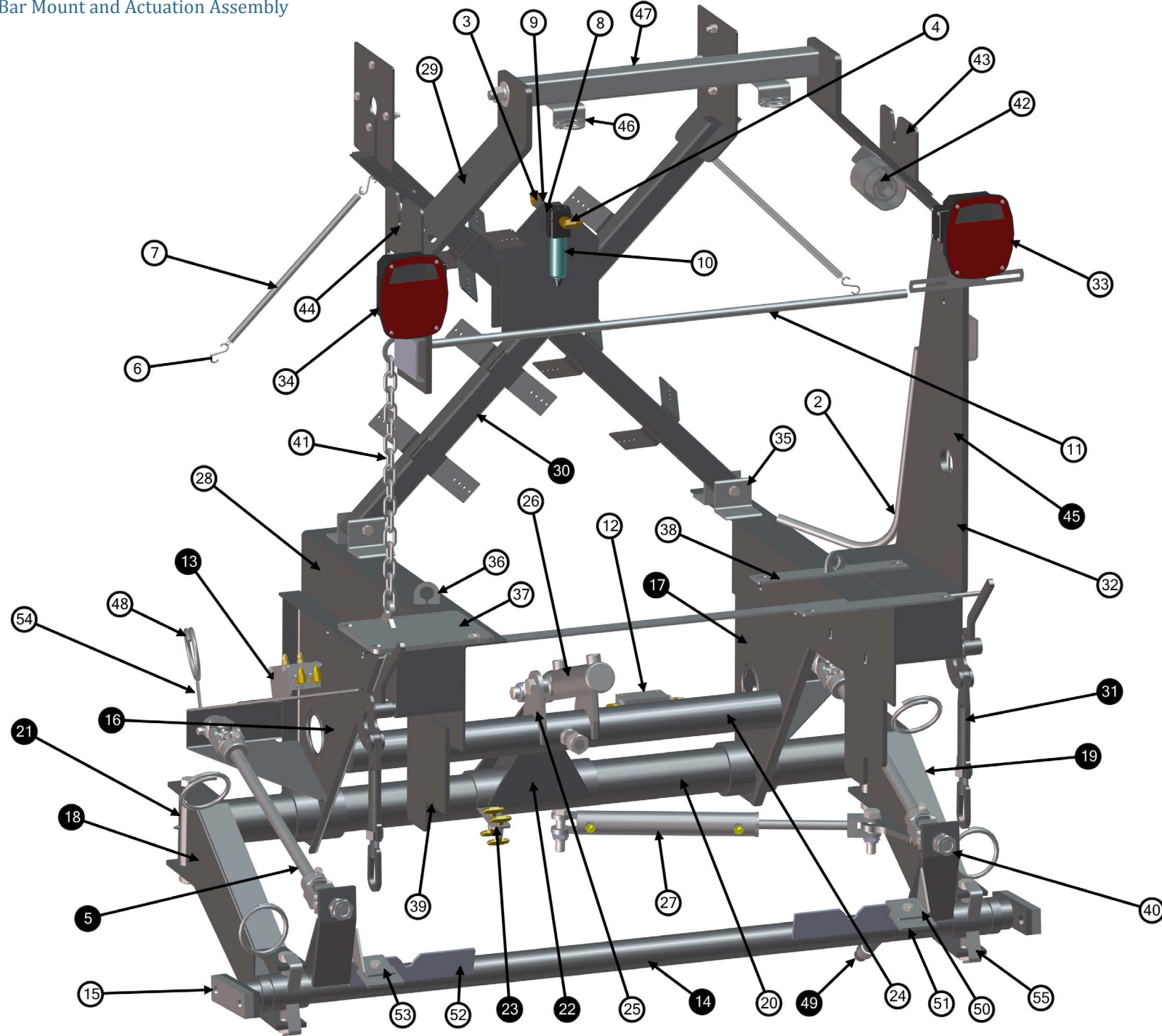
ID	Part #	Qty
1	202467	1
2	205886	1
3	205961	1
4	206406	1
5	208412	1
7	209785	1
8	210281	1
10	210397	1
11	210521	1
12	45D8MJ-8MP	1
13	BRK-27350	1
15	FAS-28548	4
16	FAS-28549	4
18	FIT-26039	2
19	FIT-28003	1
20	FIT-28004	2
21	FIT-28045	1
22	FIT-28237	1
23	FIT-28345	1
24	FIT-50184	1
25	FIT-52124	1
26	MSC-26455	1
27	MSC-26477	1
28	MSC-27279	1
30	MSC-27494	2

ID	Part #	Qty
31	MSC-27495	2
32	MSC-27527	1
33	RNG-29055	2
34	RNG-29060	3
35	RNG-29061	2
36	RNG-29065	1
37	RNG-29066	2
38	RNG-29068	1
39	VLV-29215	1
40	VLV-29227	1
41	VLV-29310	1
42	VLV-35137	1
43	205891	1
44	FTR-52165	1
45	FIT-29940	1
46	VLV-29229	1
47	GRD-27083	1
48	RNG-52179	1
49	RNG-27198	2
50	MSC-27270	1
51	CYL-27316	1
52	CYL-27321	1
53	CYL-27324	2
54	90D12MJ-12MP	1
55	VLV-29244	1

209539



L Bar Mount and Actuation Assembly

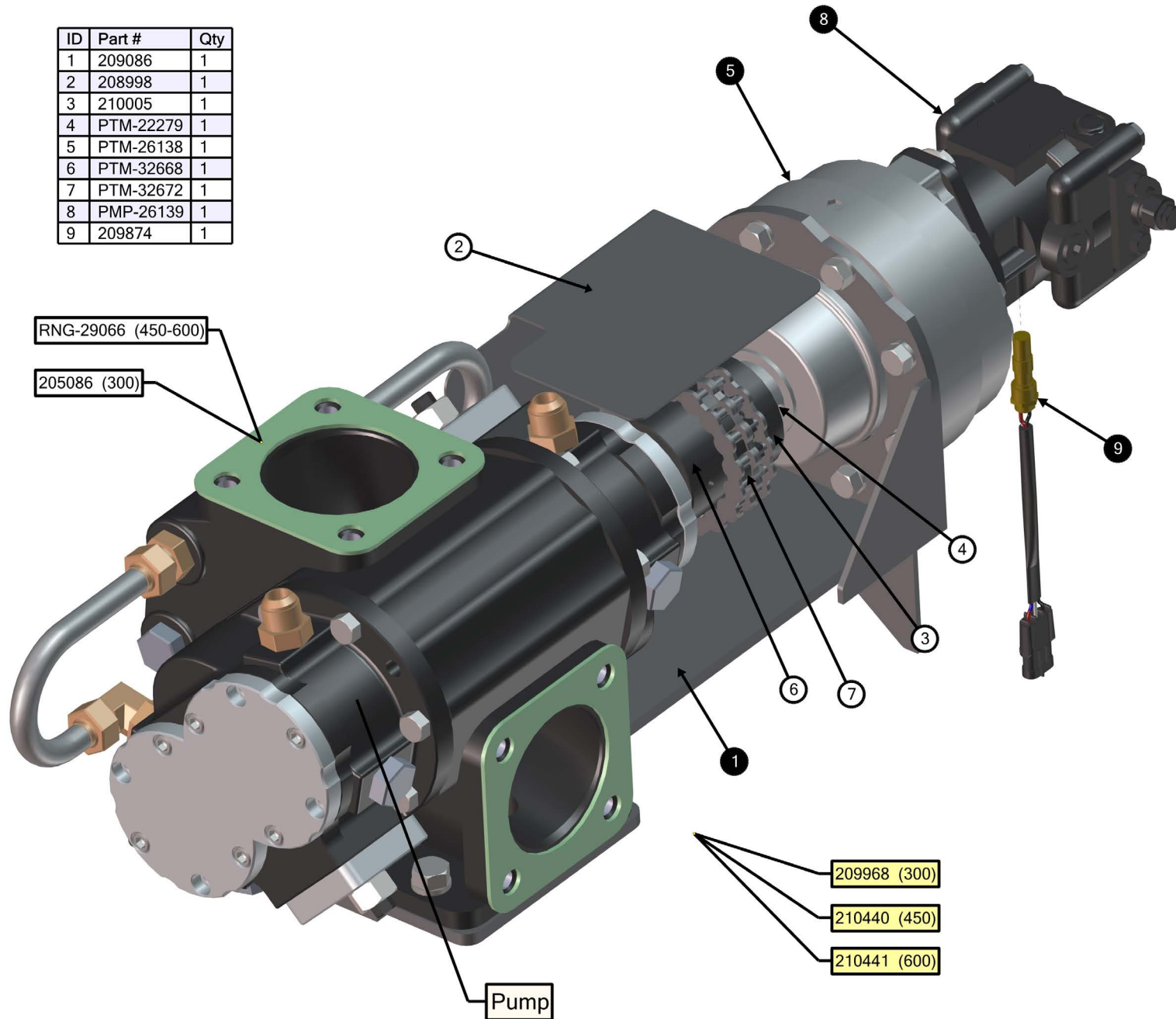


ID	Part #	Qty
2	209752	1
3	45D8MJ-6MP	1
4	90D8MJ-6MP	1
5	BRK-26368	2
6	FAS-100004	4
7	FAS-29407	2
8	FIT-28002	2
9	FIT-28177	1
10	FTR-22540	1
11	PIP-27324	1
12	VLV-100011	1
13	VLV-100012	4
14	MCH-52043	1
15	BRK-26345	2
16	BRK-52038	1
17	204933	1
18	MCH-52036	1
19	204942	1
20	BRK-52018	1
21	FIT-52009	2
22	MCH-52041	1
23	MSC-26435	1
24	BRK-52044	1
25	BRK-52045	2
26	CYL-52040	1
27	CYL-22300	1
28	BRK-52011	2
29	204965	1

ID	Part #	Qty
30	209062	1
31	GRD-52054	2
32	204964	1
33	ELC-24206	1
34	ELC-24207	1
35	BRK-52061	4
36	BRK-26443	2
37	BRK-27475	1
38	BRK-52062	2
39	BRK-52017	2
40	FAS-28520	8
41	206881	1
42	ELC-24293	1
43	204972	1
44	BRK-26206	1
45	HSG-26205	1
46	204962	2
47	204967	1
48	RNG-26422	6
49	MCH-52060	1
50	204956	1
51	BRK-26429	2
52	BRK-52015	2
53	BRK-52076	1
54	BRK-27582	2
55	BRK-26426	4

209540

ID	Part #	Qty
1	209086	1
2	208998	1
3	210005	1
4	PTM-22279	1
5	PTM-26138	1
6	PTM-32668	1
7	PTM-32672	1
8	PMP-26139	1
9	209874	1



RNG-29066 (450-600)

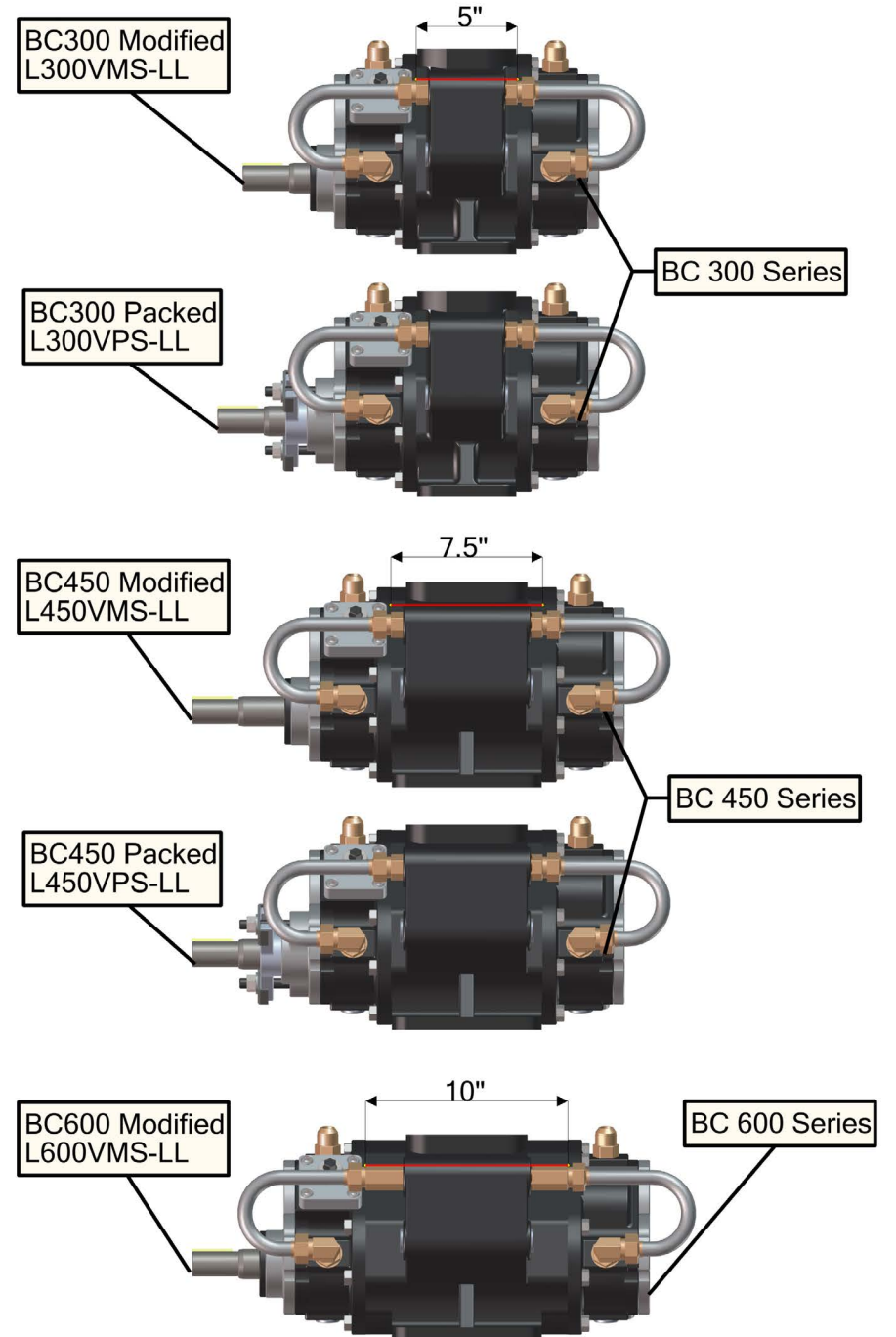
205086 (300)

209968 (300)

210440 (450)

210441 (600)

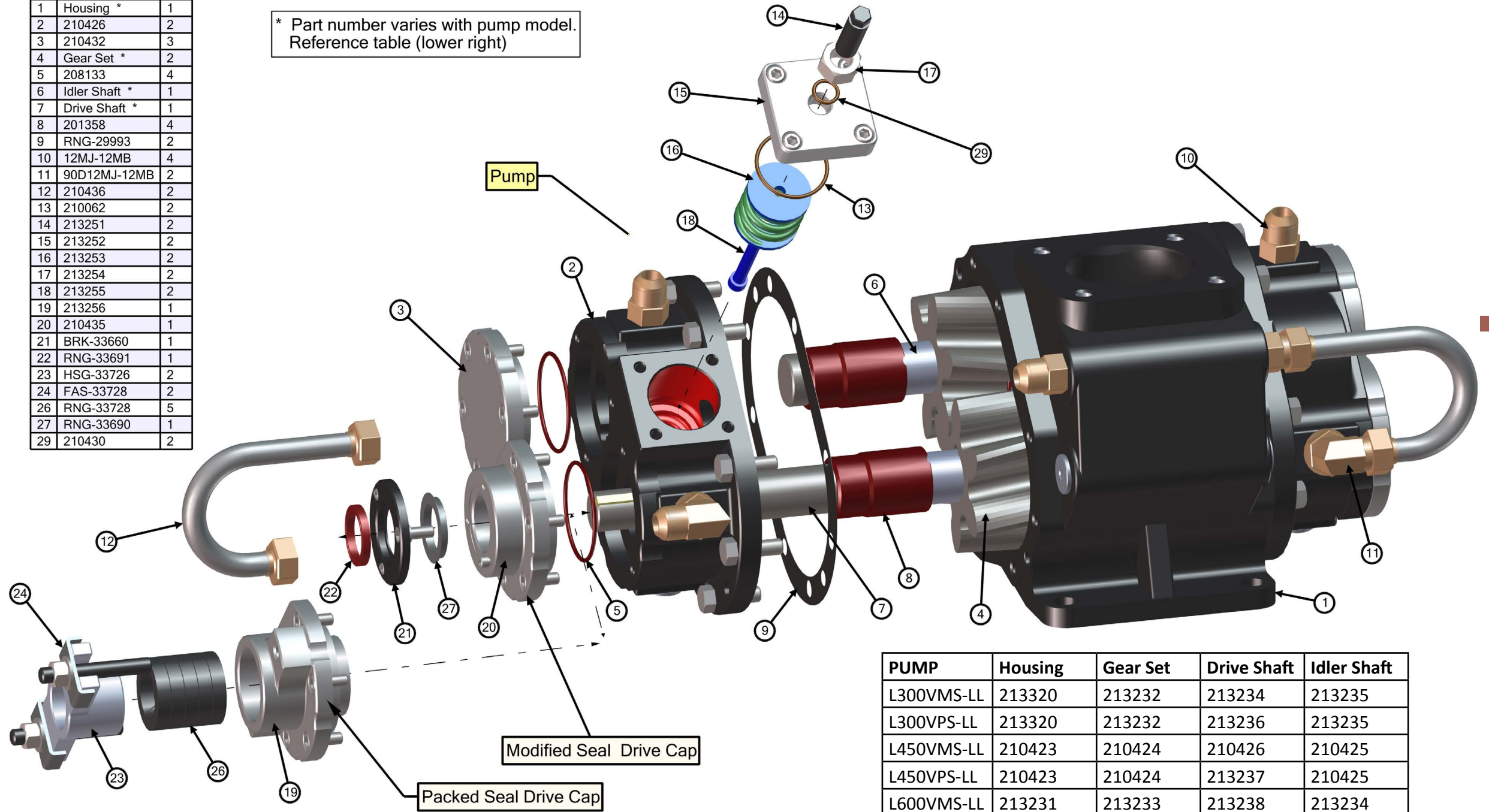
Pump



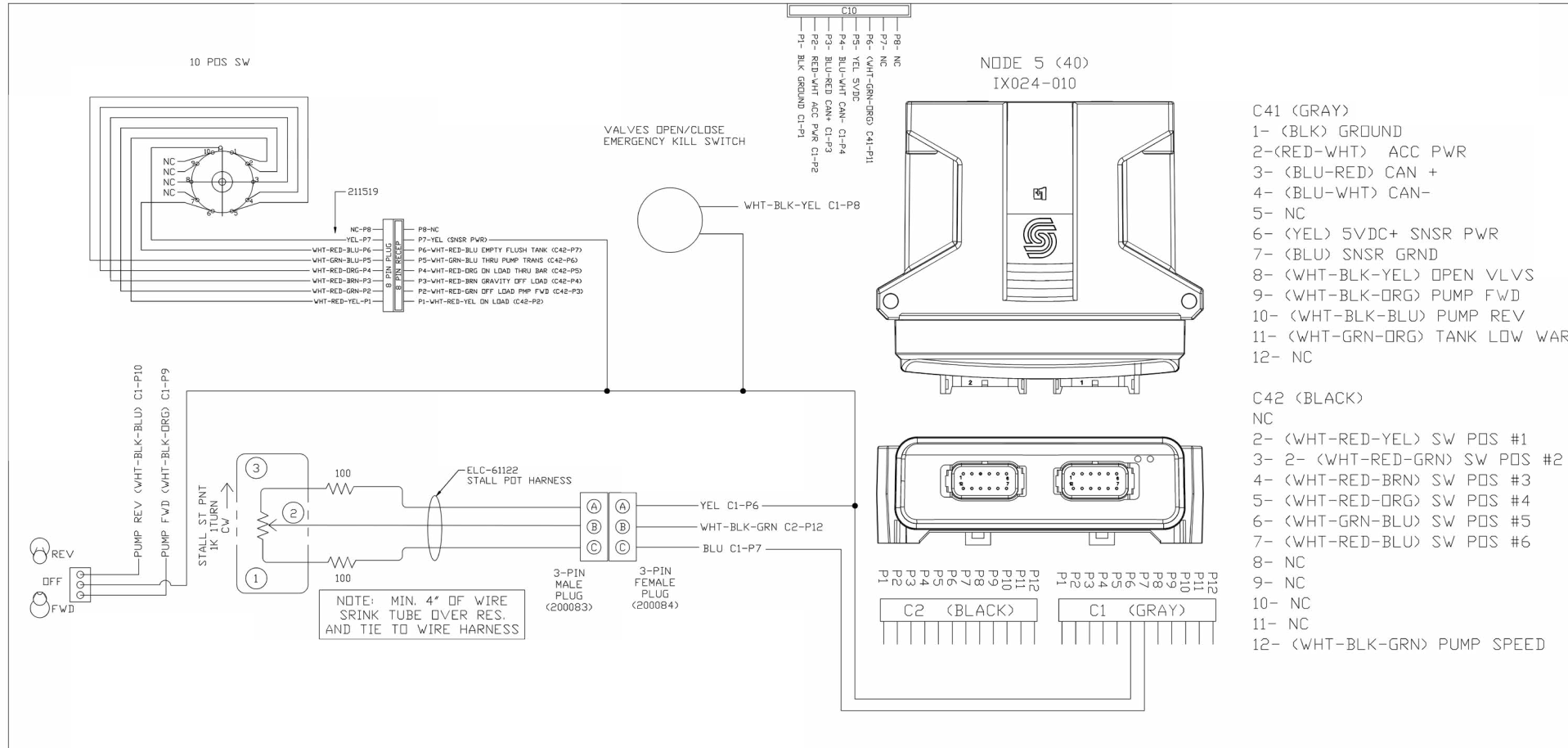



ID	Part #	Qty
1	Housing *	1
2	210426	2
3	210432	3
4	Gear Set *	2
5	208133	4
6	Idler Shaft *	1
7	Drive Shaft *	1
8	201358	4
9	RNG-29993	2
10	12MJ-12MB	4
11	90D12MJ-12MB	2
12	210436	2
13	210062	2
14	213251	2
15	213252	2
16	213253	2
17	213254	2
18	213255	2
19	213256	1
20	210435	1
21	BRK-33660	1
22	RNG-33691	1
23	HSG-33726	2
24	FAS-33728	2
26	RNG-33728	5
27	RNG-33690	1
29	210430	2

* Part number varies with pump model.
Reference table (lower right)



PUMP	Housing	Gear Set	Drive Shaft	Idler Shaft
L300VMS-LL	213320	213232	213234	213235
L300VPS-LL	213320	213232	213236	213235
L450VMS-LL	210423	210424	210426	210425
L450VPS-LL	210423	210424	213237	210425
L600VMS-LL	213231	213233	213238	213234

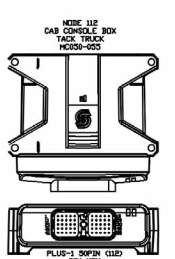
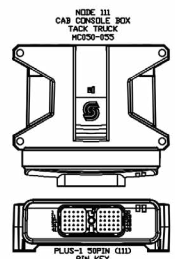


QTY	NEXT ASS'Y	MADE BY	BEARCAT	 <p>3650 SABIN BROWN RD. WICKENBURG, AZ 85390 (928) 684-7851</p>						
?	---	APPROVED								
		MATERIAL	SEE PRINTED B.O.M.							
		FINISH								
	FINAL ASS'Y	DRAWING NO.		TITLE						
?	---			SCHE ELC SIDE CONTROL BOX TACK TRUCK						
				PART NO.						
				202825						
STANDARD	.X	.XX	.XXX	XXXX	ANG.	X/X	AUTHOR	FHK	DATE	2-1-11
TOLERANCE	.02	.010	.003	.0005	1.0*	1/32	SCALE	NONE	SHEET	1 OF 1



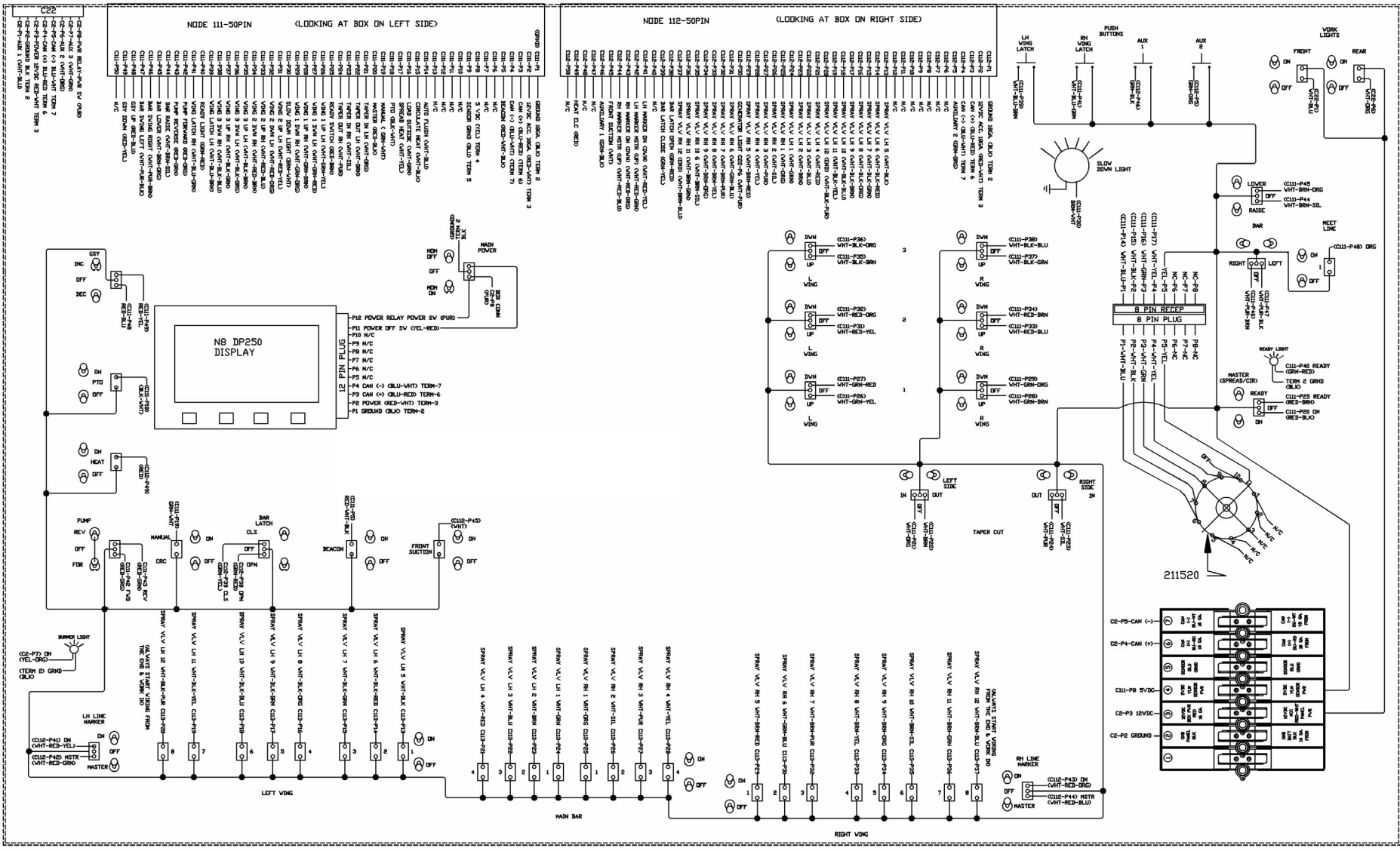
- PIN 1-GND BLK TERM 8
- 2-12V+ RED-VHT TERM 3
- 3-CAN+ BLU-RED TERM 6
- 4-CAN- BLU-WHT TERM 7
- 5-BEADRN
- 6-N/C
- 7-N/C
- 8-SNSR SV+ YEL TERM 4
- 9-SNSR GRND BLU TERM 5
- 10-N/C
- 11-N/C
- 12-N/C
- 13-N/C
- 14-AUTO FLUSH WHT-BLU
- 15-CIRCULATE HEAT WHT-BLK
- 16-SPREAD HEAT WHT-YEL
- 17-PTD BLK-WHT
- 18-MANUAL GRN-WHT
- 19-MASTER REC-BLK
- 20-TAPER IN LH WHT-DRG
- 21-TAPER OUT LH WHT-BRN
- 22-TAPER IN RH WHT-SIL
- 23-TAPER OUT RH WHT-PUR
- 24-READY SW RED-BRN
- 25-N/C

- PIN 26-VING 1 UP LH WHT-GRN-YEL
- 27-VING 1 DOWN LH WHT-GRN-DRG
- 28-VING 1 UP RH WHT-GRN-BRN
- 29-VING 1 DOWN RH WHT-GRN-DRG
- 30-SLIDE DOWN LIGHT BRN-WHT
- 31-VING 2 UP LH WHT-RED-YEL
- 32-VING 2 DOWN LH WHT-RED-DRG
- 33-VING 2 UP RH WHT-RED-BLU
- 34-VING 2 DOWN RH WHT-RED-BRN
- 35-VING 3 UP LH WHT-BLK-BRN
- 36-VING 3 DOWN LH WHT-BLK-DRG
- 37-VING 3 UP RH WHT-BLK-GRN
- 38-VING 3 DOWN RH WHT-BLK-BLU
- 39-VING LATCH LH WHT-BLU-BRN
- 40-READY LIGHT GRN-RED
- 41-VING LATCH RH WHT-BLU-GRN
- 42-READY FWD RED-GRN
- 43-PUMP RELY RED-GRN
- 44-BAR RAISE WHT-BRN-SIL
- 45-BAR LOWER WHT-BRN-DRG
- 46-BAR SWING LEFT WHT-PUR-BRN
- 47-BAR SWING RIGHT WHT-PUR-BLU
- 48-GSY UP RED-BLU
- 49-GSY DOWN RED-YEL
- 50-N/C



- PIN 1-GND BLK TERM 2
- 2-12V+ RED-VHT TERM 3
- 3-CAN+ BLU-RED TERM 6
- 4-CAN- BLU-WHT TERM 7
- 5-AUXILIARY 2 GRN-DRG
- 6-N/C
- 7-N/C
- 8-N/C
- 9-N/C
- 10-N/C
- 11-N/C
- 12-N/C
- 13-SPRAY VLV LH 5 WHT-BLK
- 14-SPRAY VLV LH 6 WHT-BLK-RED
- 15-SPRAY VLV LH 7 WHT-BLK-GRN
- 16-SPRAY VLV LH 8 WHT-BLK-DRG
- 17-SPRAY VLV LH 9 WHT-BLK-BRN
- 18-SPRAY VLV LH 10 WHT-BLK-BLU
- 19-SPRAY VLV LH 11 WHT-BLK-YEL
- 20-SPRAY VLV LH 12 WHT-BLK-PUR
- 21-SPRAY VLV LH 4 WHT-RED
- 22-SPRAY VLV LH 3 WHT-BLU
- 23-SPRAY VLV RH 4 WHT-RED
- 24-CENTER SPRAY VLV LH 1 WHT-GRN
- 25-CENTER SPRAY VLV RH 1 WHT-DRG

- PIN 26-SPRAY VLV RH 2 WHT-SIL
- 27-SPRAY VLV RH 3 WHT-PUR
- 28-SPRAY VLV RH 4 WHT-YEL
- 29-SPRAY VLV RH 5 WHT-BRN-RED
- 30-N/C
- 31-SPRAY VLV RH 6 WHT-GRN-BLU
- 32-SPRAY VLV RH 7 WHT-BRN-PUR
- 33-SPRAY VLV RH 8 WHT-BRN-YEL
- 34-SPRAY VLV RH 9 WHT-BRN-DRG
- 35-SPRAY VLV RH 10 WHT-BRN-SIL
- 36-SPRAY VLV RH 11 WHT-BRN-GRN
- 37-SPRAY VLV RH 12 WHT-BRN-BLU
- 38-BAR LATCH OPEN GRN-RED
- 39-BAR LATCH CLOSE RED-GRN
- 40-N/C
- 41-LINE MARKER LH GSY DOWN ON WHT-RED-YEL
- 42-LINE MARKER LH GSY UP MASTER WHT-GRN-DRG
- 43-LINE MARKER RH GSY DOWN ON WHT-RED-GRN
- 44-LINE MARKER RH GSY UP MASTER WHT-RED-BLU
- 45-FRONT SUCTION WHT
- 46-AUXILIARY 1 GRN-BLK
- 47-N/C
- 48-N/C
- 49-HEAT ELECTRIC RED
- 50-N/C



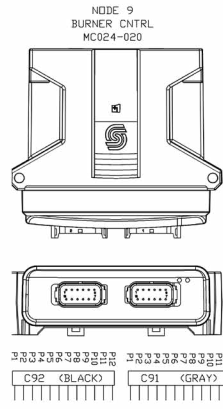
QTY	NEXT ASSY	MADE BY	BEARCAT
		APPROVED	
		MATERIAL	
		SEE PRINTED B.O.M.	
		FINISH	

3630 SHERBORN RD. ROCKFORD, IL 61201 (815) 998-7851	
TITLE SCHE ELC CAB CONSOLE	
BX PLUS1 501/ETK 2011	
PART NO. 207058	

STANDARD	X	XX	XXX	XXXX	ANG	X	X
TOLERANCE	F.03	F.015	F.005	F.0025	F.01	F.1	F.32
AUTHOR	RMH	DATE	12-7-11				
SCALE	NONE	SHEET	OF				

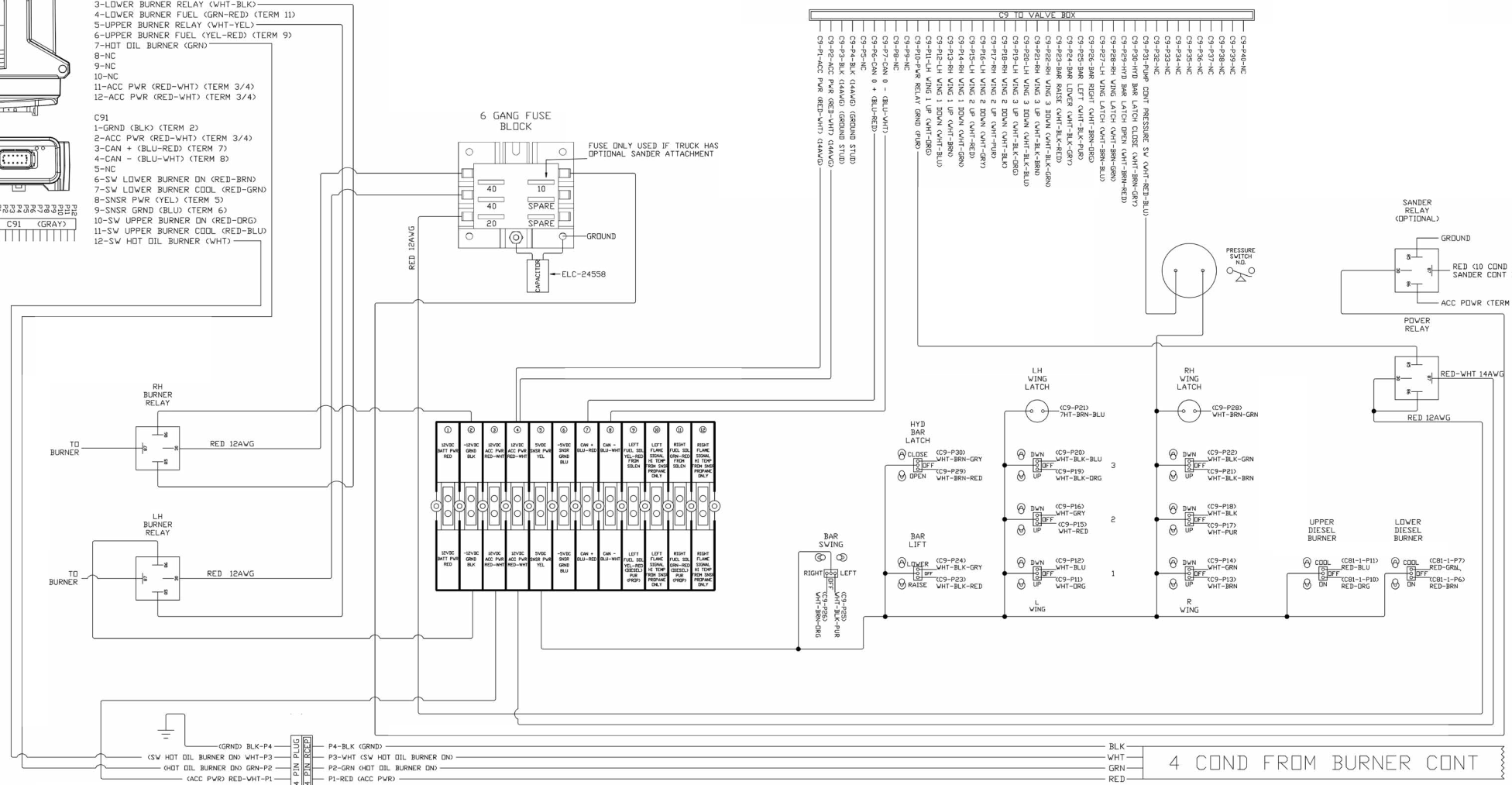


Rear Control Box



- C92**
- 1-NC
 - 2-NC
 - 3-LOWER BURNER RELAY (WHT-BLK)
 - 4-LOWER BURNER FUEL (GRN-RED) (TERM 11)
 - 5-UPPER BURNER RELAY (WHT-YEL)
 - 6-UPPER BURNER FUEL (YEL-RED) (TERM 9)
 - 7-HOT OIL BURNER (GRN)
 - 8-NC
 - 9-NC
 - 10-NC
 - 11-ACC PWR (RED-WHT) (TERM 3/4)
 - 12-ACC PWR (RED-WHT) (TERM 3/4)

- C91**
- 1-GRND (BLK) (TERM 2)
 - 2-ACC PWR (RED-WHT) (TERM 3/4)
 - 3-CAN + (BLU-RED) (TERM 7)
 - 4-CAN - (BLU-WHT) (TERM 8)
 - 5-NC
 - 6-SW LOWER BURNER ON (RED-BRN)
 - 7-SW LOWER BURNER COOL (RED-GRN)
 - 8-SNSR PWR (YEL) (TERM 5)
 - 9-SNSR GRND (BLU) (TERM 6)
 - 10-SW UPPER BURNER ON (RED-DRG)
 - 11-SW UPPER BURNER COOL (RED-BLU)
 - 12-SW HOT OIL BURNER (WHT)



OPTIONAL HOT OIL BURNER

QTY	NEXT ASSY	MADE BY	BEARCAT
?	---	APPROVED	
		MATERIAL	
		SEE PRINTED B.O.M.	
		FINAL ASSY	
?	---		
		FINISH	
STANDARD	.X .XX .XXX .XXXX	ANG	X/X
TOLERANCE	+0.3 +0.15 +0.05 +0.005	H.O	± 1/32
		AUTHOR	RH
		SCALE	NONE
		DATE	8-22-13
		SHEET	?? OF ??

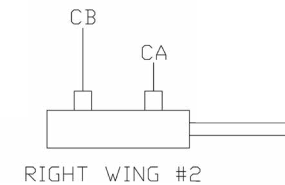
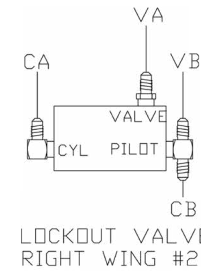
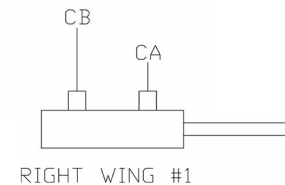
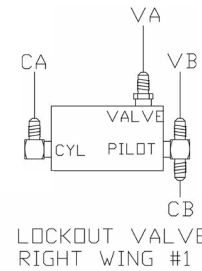
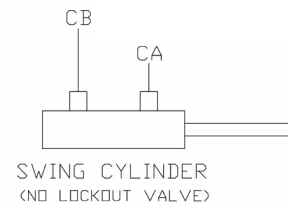
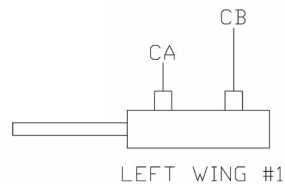
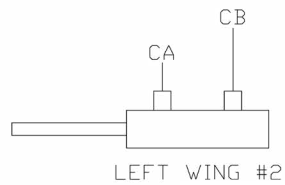
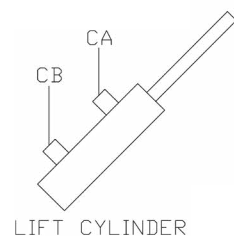
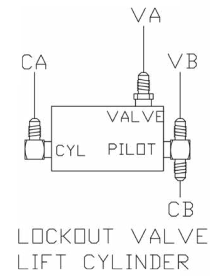
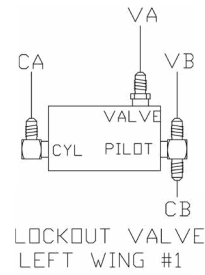
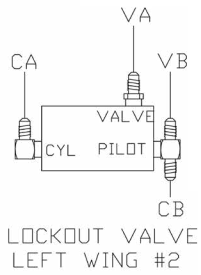
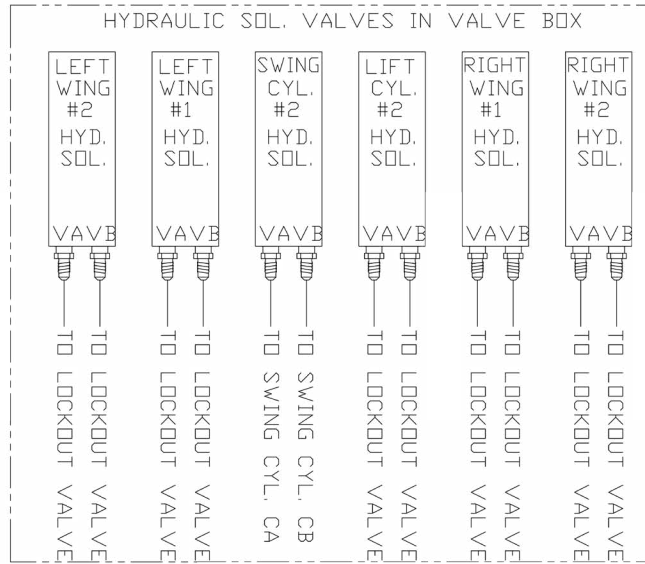


3550 SABIN BROWN RD.
WICKENBURG, AZ 85390
(520)684-7851

BEARCAT MFG. CO.

TITLE
502 REAR CONTROL BOX
2014

PART NO.
209037



QTY	NEXT ASSY	MADE BY	BEARCAT
?	---	APPROVED	
		MATERIAL	
		SEE PRINTED B.O.M.	
FINAL ASSY			
?	---		
		FINISH	
STANDARD	.X	.XX	.XXX XXXX ANG X/X
TOLERANCE	±.03	±.015	±.005 ±.0005 ±1.0 ±1/32
		AUTHOR	RH
		SCALE	NONE
		DATE	8-20-13
		SHEET	?? OF ??

