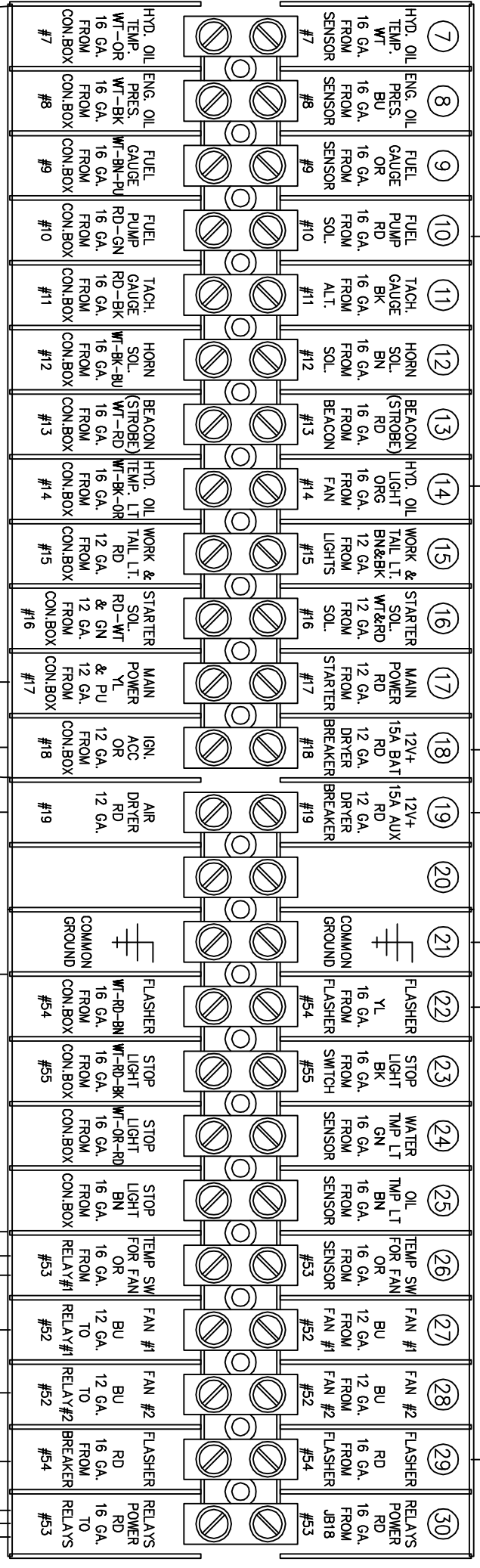
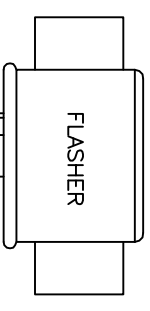
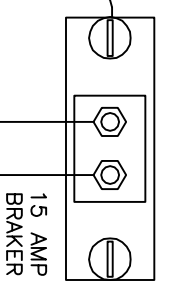
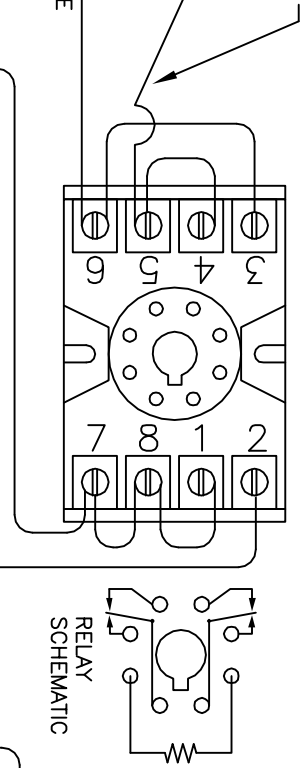


EXISTING WIRE FROM FUEL SOLENOID ON OLDER CUMMINS ENGINES
 MOVE THIS WIRE FROM BARRIER STRIP (#10 PORT) RECONNECT WIRE TO SOCKET BASE(OLDER CUMMINS ENGINES OSB DOES NOT HAVE FUEL SOLENOID WIRE)

WHT/BLK WIRE 45-COND. FROM CONSOLE(POWER) OSB CUMMINS ENGINES

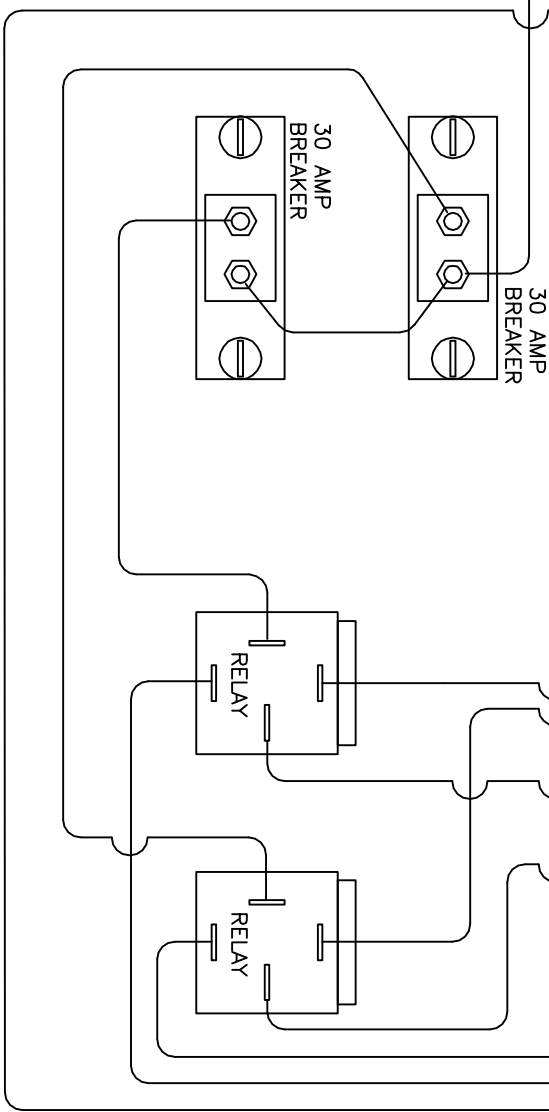
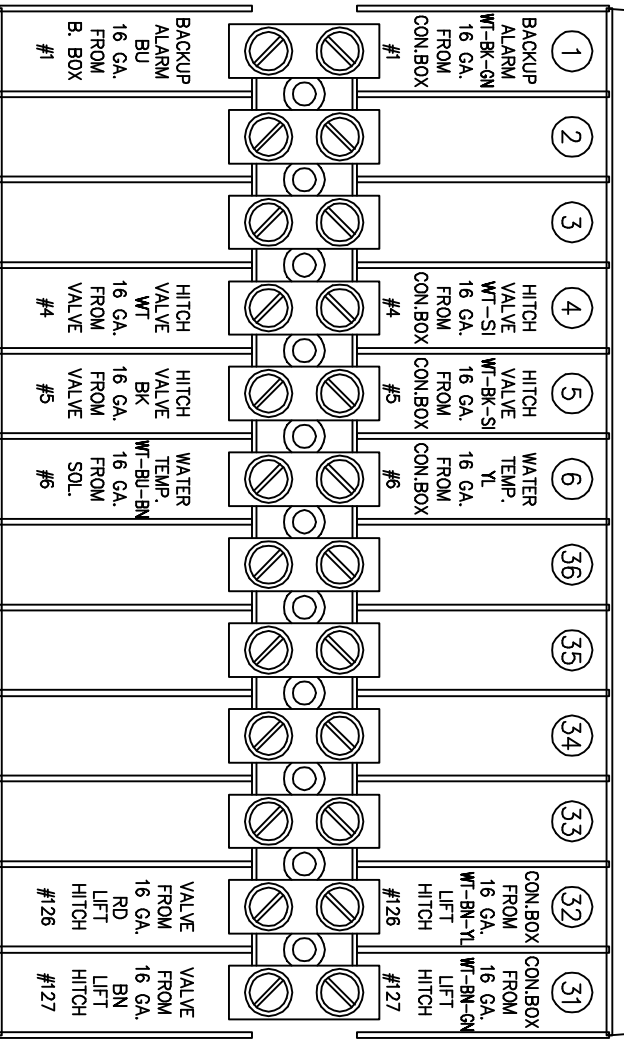
RD/BRN WIRE IN 45 COND. TO CONSOLE

WARNING LITES ON CONSOLE



45 CON. FROM CONTROL BOX

45 CON. FROM CONTROL BOX



REV: 7-7-03 REMOVED 50 AMP BREAKER ADDED (2) 30 AMP BREAKERS AND REWIRED 70 AMP RELAYS FHK/BOOPER
 REV: 2-23-00 ADDED RELAY AND SOCKET FOR HOT OIL ENGINE SHUT-DOWN.
 REV: 8-12-03 REMOVED DOTTED LINE TO PORT #10 ADDED NEW TEXT ABOUT OSB ENGINE WIRING FHK/BOOPER
 5-6-A SCH-53430 WIRING DETAIL JUNCTION BOX, TANDEM CHIPPER